

# Las Positas College International Student Handbook



International Student Program Office  
Las Positas College  
Room # 1502  
3033 Collier Canyon Road  
Livermore, CA USA 94551  
[www.laspositascollege.edu/international](http://www.laspositascollege.edu/international)

## Table of Contents

Acknowledgements.....	4
Welcome to Las Positas College.....	5
International Student Program Office.....	6
Contact Information.....	7
I. Immigration Visa and Legal Issues.....	8
F-1 Student Information .....	8
Maintaining Your F-1 Student Visa Status .....	8
SEVIS.....	10
Travel and Re-entry.....	11
Travel to and from Canada.....	11
Travel to and from Mexico.....	12
Employment.....	13
On Campus.....	13
Economic Hardship.....	13
Optional Practical Training (OPT).....	14
Curricular Practical Training (CPT) .....	15
Consulates in the San Francisco Bay Area.....	16
Immigration Status Frequently Asked Questions (FAQ).....	17
II. Health Matters.....	20
Health Care.....	20
Medical Insurance in the U.S.A.....	21
Important Medical Insurance Vocabulary.....	
Pregnancy Vocabulary.....	23
Resources for Families with Children.....	26
Important Emergency Phone Numbers.....	27
III. Safety Issues.....	28
Safety Concerns.....	28
Earthquake Safety.....	28
Disaster Safety.....	29
Sexual Assault and Rape.....	30
IV. Living in the U.S.A.....	31
Housing.....	31
Financial Matters.....	33
Banks.....	33
Tipping.....	34
Social Security Number.....	35
California Driver's License and ID Card....	36
Places of Worship.....	40
Public Transportation.....	41
General Frequently Asked Questions (FAQ).....	42
V. Academic Matters.....	46
Higher Education in the U.S.A.....	46
California Public Colleges and Universities.....	46
Academic Structure.....	48

Academic and Other Important Terms.....	50
Useful Acronyms.....	53
Academic Frequently Asked Questions (FAQ) .....	54
VI. Having Fun.....	57
Area Calendar of Events.....	57
Area Attractions.....	59
Sports.....	63
Places to Visit.....	65
Travel Timetable.....	67
VII. Cultural Issues.....	68
U.S. Holidays .....	68
U.S. American Cultural Values and Assumptions.....	71
Cultural Adjustment.....	73
VIII. Metric Conversion.....	75
IX. Campus Map.....	76

## **Acknowledgements**

Las Positas College 2007 – 2008 Student Handbook  
NAFSA's International Student Handbook  
San Francisco Bay City Guide, July 2007  
Survival Kit for Overseas Living by Robert Kohls, Intercultural Press  
Tri-Valley 2006-2007 Visitors Guide

A special thanks to Cindy Balero, Sylvia Rodriguez, Gilberto Victoria, Laura Weaver and Nancy Wright for their considerable time in making contributions to and editing this handbook.

Note: Throughout this handbook, the citizens and residents of the United States of America are referred to as "U.S. Americans". Although many people here and abroad call residents of the U.S.A. simply as "Americans"; this term could also refer to any resident of North, Central or South America.

2<sup>nd</sup> Edition. January, 2008

1<sup>st</sup> Edition. August, 2007

## **Welcome to Las Positas College**

The Las Positas College (LPC) International Student Program extends a warm welcome to all Las Positas College International students. We have written this handbook for you, hoping to ease the transition of settling into a new environment and to prepare you for your student life at LPC. Please take time to read this information carefully. We hope it will answer many of your questions. It is important to us that you have an enjoyable and productive stay here at LPC. We're glad you're here!

Sean Day  
International Admissions Specialist

## **International Student Program Office**

The International Student Program (ISP) Office assists the college's F-1 visa International students in adjusting to life at LPC, the Tri-Valley Area, and the United States. At the beginning of each semester, ISP conducts extensive orientation programs for new International students. In addition, the office provides advice concerning immigration and visa matters, cultural adjustment, academic matters, personal and financial counseling, and employment regulations. Furthermore, ISP conducts various workshops during the academic year on topics of special interest to International students and organizes a variety of social, cultural, educational, and recreational activities designed to help familiarize International students with life in the U.S. You can also access additional information about LPC on the internet at [www.laspositas.college/international](http://www.laspositas.college/international). The ISP Office has professional staff who are sensitive to the needs and concerns of International students and who are dedicated to providing you with the highest quality service. Do not hesitate to contact us if you have any questions. We are pleased to be of service to you and happy to be a part of your experience here at Las Positas College.

## Contact Information

<b>Mailing Address</b>	3033 Collier Canyon Road Livermore, CA 94551
<b>World Wide Web Address</b>	<a href="http://www.laspositascollege.edu">www.laspositascollege.edu</a>
<b>International Student Program (ISP) Office</b>	Building 1500, Room # 1502
<b>ISP Fax</b>	<b>(925) 424-1877</b>
<b>ISP Staff</b>	<b>Cindy Balero</b> International Student Program Coordinator <a href="mailto:cbalero@laspositascollege.edu">cbalero@laspositascollege.edu</a> (925) 424-1548  <b>Sean Day</b> International Admissions Specialist <a href="mailto:sday@laspositascollege.edu">sday@laspositascollege.edu</a> (925) 424-1540
<b>ISP Office Hours</b>	Mondays - Thursdays    9:00 am – 4:00 pm Fridays                        9:00 am – 1:00 pm
<b>International Student Academic Counselors</b>	<b>Gilberto Victoria</b> (925) 424-1477 <a href="mailto:gvictoria@laspositascollege.edu">gvictoria@laspositascollege.edu</a>  <b>Nancy Wright</b> (925) 424-1473 <a href="mailto:nwright@laspositascollege.edu">nwright@laspositascollege.edu</a>
<b>Bookstore</b>	Building 1300 (925) 424-1812
<b>Campus Safety and Security</b>	Building 1600, Room # 1605 (925) 424-1690
<b>Counseling</b>	Building 700 (925) 424-1400
<b>Health Center</b>	Building 1700, Room # 1701 (925) 424-1830
<b>Library</b>	Building 2000 (925) 424-1151

## I. Immigration, Visa and Legal Issues

### F-1 Student Information

#### Maintaining Your F-1 Student Non-Immigration Visa Status

You must do the following to maintain your F-1 student non-immigrant visa status:

- Have a valid passport
- Attend the school you are authorized to attend
- Be enrolled at school full-time (at least 12 units per semester in the Fall and Spring) unless otherwise authorized. (Summer is optional). Withdrawals (W) are not recognized by the Immigration service and thus may not be counted in your 12 units. If you withdraw from a class and are attending less than 12 units, you will forfeit your F-1 status.
- Report a change of address to the International Student Program (ISP) Office within 10 days of your move
- Have an unexpired I-20. Apply for a program extension if you cannot complete your program on the program completion date indicated on your I-20
- Refrain from off-campus employment without authorization

#### Important Immigration Documents and Definitions

##### Passport

Your passport must be valid at all times during your stay in the U.S. You may renew your passport by contacting your nearest consulate. See the list of consulates.

##### I-94

The Form I-94 is an Immigration form also called your Arrival and Departure Record that you received and completed on the airplane. This is a very important document. If it is ever lost or damaged, please come to the International Student Program Office for assistance on applying to the Department of Homeland Security (DHS) for a replacement. The DHS charges a fee for this application. It has the date you entered the U.S., the port of entry, what class or status you have and says how long your status is valid for. It should be stamped with "D/S" which means "duration of status" which means that you are allowed to stay in the U.S.A. for the completion of your study, plus your 60 day grace period.

##### I-20

This is another important document. This is the Certificate of Eligibility for Nonimmigrant (F-1) Students. This document has your program start date and completion date, your major, and the estimated amount of cost for your studies and source of funds. If you ever lose or damage this document, please come to the ISP Office who can issue you a replacement I-20. If your I-20 is going to expire soon, come to the ISP Office so we can extend your program and issue you a new I-20. **Failure to do so could result in you losing your lawful status and may result in deportation and future exclusion from the U.S.A.**

##### Admission Number

The admission number is the eleven digit number printed on the I-94 card. This admission number, given to you at the port of entry when you first came to the U.S., will be the admission number you will use for as long as you are holding an F-1 visa.

## **Visa**

The visa is an entry stamp from the U.S. Department of State that shows you are eligible for a certain amount of time, to apply to enter the U.S.A. Once you are in the United States, the visa means very little. You are allowed to remain in the U.S. even if your visa has expired. The only thing to be careful about is that if you want to leave the U.S. and return and your visa has expired, you will need to apply for a new visa. You can only renew your visa at a U.S. consulate office outside the U.S.

## **Visa vs. Status**

Once you have been admitted to the U.S., you are considered by Las Positas College and the various immigration services as having **F-1 status** (not an F-1 visa). The importance of having a certain visa ends when you leave the airport; for the rest of your stay in the U.S., people will refer to your F-1 status. (Your F-1 visa will probably expire before your F-1 status, which is OK.)

The status designation is usually (but not always) the same as the visa type, such as an F-1 student visa and an F-1 status designation on your I-94, but it is possible to be admitted to the U.S. with a certain visa status, such as a J-1 (exchange visitor) visa status and then apply to the U.S. Citizenship and Immigration Services (USCIS) for a change of status to F-1 (student). If the USCIS approves such a change, the person will have a J-1 visa stamp in his or her passport, but will have an F-1 status designation on his or her new Form I-94.

## SEVIS

SEVIS stands for “Student and Exchange Visitor Information System”. It is a U.S. government computerized system that maintains and manages data about International students and exchange visitors during their stay in the United States. All I-20s are generated from this system.

### **What information does SEVIS have about me?**

SEVIS maintains information such as your permanent and local addresses and your program start and completion dates. Also, the U.S. Department of Homeland Security (DHS, formerly known as the Immigration and Naturalization Service or INS) requires that Designated School Officials (DSO) update any changes in your program, including failure to maintain status.

### **What information does my school’s Designated School Official (DSO) have to report about me?**

The school’s DSO is legally required and must report the following in SEVIS about each student within 21 days:

- Failure to maintain status or complete program
- Change to student address or legal name (a student must report a change of address to the ISP within 10 days of your move)
- Early completion of program
- Disciplinary action as a result of student being convicted of a crime
- Any other SEVIS request
- A DSO must register any new or continuing student in SEVIS within 30 days of the program start date

In addition to this, a DSO must respond within 3 business days to any DHS request for the following information: (if a request about you is made by the DHS, the ISP Office will ask for the request to be made in writing, and we will attempt to notify you of this request).

- Your name
- Date and place of birth
- Country of citizenship
- Current address
- Current academic status
- Date of commencement of studies
- Degree program and field of study
- Practical training dates
- Termination date and reason, if known
- Documents relating to the your admission to the school (application, transcript, financial document)
- Number of credits
- Photocopy of your I-20

**Failure of a DSO to record events in SEVIS, and respond to DHS requests, could result in criminal charges for the individual and withdrawal of approval for the school to issue I-20s.**

## Travel and Re- Entry to the U.S.

If you are a continuing student and wish to take a trip and leave the U.S. for 5 months or less, please come to the International Student Program (ISP) Office to discuss your plans. You are allowed to leave the U.S. and re-enter if you have a valid I-20, passport, and F-1 student visa. An exception to having an unexpired visa is for trips to Canada, Mexico or neighboring Caribbean countries, with the exception of Cuba. Please see below for more information on traveling to these countries. Please make sure of the entry requirements of traveling abroad if you are not going to your home country. You may need a visa to travel to other countries. Please see the country's embassy or consulate webpage for more information. If you will continue your studies at Las Positas College, you will also need to have your I-20 endorsed on page 3 by a DSO in the ISP Office. To avoid any difficulties at the port of entry inspection, **we recommend that you come to our office to have your I-20 signed each time you leave the U.S.**

**If you will travel outside the U.S. you must carry the following documents with you for re-entry into the U.S.:**

- Valid Passport (with at least 6 months validity when you enter the U.S.)
- Valid I-94 card (F-1 students all have D/S)
- Valid U.S. visa stamp with at least one remaining entry (an exception is traveling to Canada, Mexico, and Caribbean islands)
- Valid SEVIS I-20 with an unexpired signature (dated within the past 12 months)

Since the Immigration Inspector may ask to see evidence of financial support for the total duration of stay in the U.S., it is strongly advised that F-1 students carry such evidence with them.

**For students on Optional Practical Training (OPT), you will need the following (in addition to the above):**

- Valid SEVIS I-20 with unexpired signature (dated within the past 6 months)
- Valid Employment Authorization Document (EAD) card
- Written job offer

If you are missing any of the above documents, you will have trouble re-entering the U.S.

### Travel to and from Canada

Citizens from certain countries who wish to visit Canada are required to obtain a visitor's visa (tourist visa) from the Canadian Consulate General in Los Angeles:

Immigration Section  
Canadian Consulate General  
550 S. Hope Street  
Los Angeles, CA 90071-2627  
Phone: (213) 346-2700, Fax: (213) 625-7154  
[www.losangeles.gc.ca](http://www.losangeles.gc.ca)



It may take the Canadian Consulate one or two working days to process and issue a visa, but take into consideration that the nearest Canadian Consulate is located in Los Angeles, and if you do not plan to go to Los Angeles personally, it must be done by mail. It may take two weeks to receive the visa, so you must plan ahead. Please note that in some instances the

Canadian Consulate in Los Angeles may wish to interview you, in which case you will need to travel to Los Angeles for the interview. So, don't purchase your airline ticket until you receive the visa from the Canadian Consulate. Canada does not require a visa for citizens of certain countries. Contact the Canadian Consulate to find out what requirements are necessary for your nationality. Visit the Citizenship and Immigration Canada website at <http://www.cic.gc.ca/english/visit/index.asp> for more information on visiting Canada.

### **Travel to and from Mexico**

Mexican tourist cards or visas are required of all persons in order to visit Mexico. Visit the



Mexican Embassy in Washington website at <http://portal.sre.gob.mx/usa/> or go to a Mexican consulate to ask about the requirements and to take the necessary steps to get your visa. The requirements differ from country to country.

As of July 1, 2007, if you are a citizen of Andorra, Argentina, Australia, Austria, Belgium, Canada, Chile, Costa Rica, the Czech Republic, Denmark, Finland, France, Germany, Great Britain, Greece, Hungary, Ireland, Israel, Italy, Japan, Liechtenstein, Luxembourg, Monaco, Netherlands, New Zealand, Norway, Poland, Portugal, Puerto Rico, San Marino, Singapore, Slovenia, Spain, South Korea, Sweden, Switzerland, Uruguay or Venezuela, you don't need a visa to enter Mexico, although you must present a valid passport and fill out an immigration form for tourists (tourist card) which can be obtained in travel agencies, airlines, the Mexican Consulate or at the point where you enter Mexico.

If you are a citizen of any other country, you need to go to a Mexican consulate to request a visa. If you have a family member, friend or acquaintance in Mexico, he or she can do this at the INM, the National Immigration Institute (INM in Spanish), the governmental agency in charge of immigration control and policy in Mexico.

Contact the Mexican Consulate at:

870 Market Street, Suite 528  
San Francisco, CA 94102  
(415) 392-5554  
<http://www.consulmexsf.com/> (in Spanish)

### **Automatic Extension of Visas (Revalidation)**

F-1 students with an expired visa may reenter the U.S. as though the visa were still valid, if returning after visits not exceeding 30 days to Mexico, Canada or the Caribbean Islands (except Cuba). A person who entered the U.S. on a visa other than F-1, but whose status was changed to F-1 status by the U.S. Citizenship and Immigration Services (USCIS), may also take advantage of the automatic extension of visa validity. A student whose visa has been cancelled or voided is not eligible for automatic visa extension.

At the present time, the "automatic revalidation of visa" benefit is not available for citizens of Cuba, Iran, Iraq, Libya, North Korea, Sudan and Syria.

PLEASE NOTE: Students who travel to Canada, Mexico, or the Caribbean Islands (except Cuba) for a visa renewal and are denied, are NOT allowed re-entry into the U.S. under the Automatic Extension of Visas.

## Employment

In order to maintain your valid F-1 status, a student must not work in the U.S., unless the employment is specifically authorized under the regulations. The types of employment available to F-1 students are the following:

- On-Campus Employment
- Employment based on Severe Economic Hardship
- Optional Practical Training (OPT)
- Curricular Practical Training (CPT)

### On-Campus Employment

F-1 students may work on campus without prior approval from the U.S. Citizenship and Immigration Services (USCIS). All F-1 students are allowed to work part-time (limited to 20 hours or less per week) on campus while school is in session. During vacation periods and official school breaks like Spring Break and during the Summer, students may work on campus full-time.

### Application Procedure for On-Campus Employment

Visit places on campus such as the Library, Bookstore, and Cafeteria, introduce yourself as an International student, and ask for a work application. Be sure to bring your class schedule with you since you may be asked what hours you are available to work.

### Severe Economic Hardship

You are allowed to apply to the USCIS for an Employment Authorization Document (EAD) to work off-campus, in the case of unforeseen economic need. To qualify, you must have been in F-1 status for at least one full academic year (Spring and Fall Semesters) and prove to the USCIS in your application, that employment is necessary due to severe economic hardship caused by circumstances beyond your control that arose after obtaining F-1 status. Examples of unforeseen economic hardship include “loss of financial aid or on-campus employment without fault on part of the student, substantial fluctuations in the value of currency or exchange rate, inordinate increases in tuition and/or living costs, unexpected changes in the financial condition of the student’s source of support, medical bills, or other substantial and unexpected expenses”. If granted, it is for increments of one year at a time or until the program end-date, whichever is shorter. Authorization ends if you transfer schools. Employment is limited to 20 hours per week while school is in session, but can be full-time during official school breaks.

### General Requirements

- You must be in valid F-1 status for at least one full academic year (Spring and Fall semesters)
- You must prove to USCIS that the employment is necessary due to severe economic hardship caused by circumstances beyond your control that occurred after obtaining F-1 status

### Application Procedure for Severe Economic Hardship

- 1) I-765 (original) marked with the code “(c)(3)(iii)” at item #16
- 2) \$340 filing fee payable to “DHS” (effective July 30, 2007)
- 3) Copy of I-20 Form with DSO recommendation for Economic Hardship employment

- 4) Photocopy of the I-94 Card (both front and back)
- 5) Two photographs
- 6) Copy of the biographical pages of your passport
- 7) Photocopy of your previous EAD (if applicable)
- 8) A letter explaining the circumstances of the economic hardship. This letter should include an explanation why the financial need is beyond your control, that it was unforeseen at the time you applied to the school you are currently attending, and that all other employment opportunities, such as on-campus employment, are either unavailable or insufficient to meet the need.
- 9) Any other supporting documents such as bank statements of the past 3 months

### **Optional Practical Training (OPT)**

OPT is designed to provide F-1 International students with opportunities for gaining practical work experience in their fields of study, for a maximum of one year (12 months). F-1 students are allowed to apply to the USCIS for up to 1 year (12 months) of full-time off-campus employment. The work may be full-time or part-time, and may occur anywhere in the United States. You may be paid for your employment. No job offer is required to apply.

### **General Requirements**

- You must be in valid F-1 student status for one academic year (Spring and Fall semesters) before pursuing any type of OPT.
- Job must be directly related to your field of study (your major as indicated on your I-20 Form) and must be appropriate for someone having your level of education.

### **Types of OPT**

According to USCIS, employment may be authorized under the following types:

- Pre-Completion OPT
- Post-Completion OPT

### **Pre-Completion Optional Practical Training**

Pre-Completion OPT is defined as employment that takes place before completion of the course of study, when you are required to be enrolled in a full course load at Las Positas College. This work is part-time (employment for 20 hours or less per week) while school is in session or, similar to the rules about on-campus employment, you may apply for part-time or full-time OPT during your summer vacation and during other official school breaks.

### **Post-Completion Practical Training**

Post-Completion OPT is employment that takes place after completion of the course of study. This employment is full-time employment, since students are no longer enrolled in a full course load. In order for you to be eligible for this type of employment, you must submit your application during a 120-day period prior to the date you complete all program requirements. You may submit your application as early as 120 days before your date of completion of coursework, but applications must be received by USCIS by the date of completion. In most cases, the date of completion is the last day of finals of the semester in which all of your degree requirements are completed (not the day of the actual commencement ceremony). For example, if the day you complete all your requirements is May 17, the earliest day you may apply for practical training would be January 17 (120 days before) and the latest possible time to apply would be the week prior to May 17. A completed application for Post-Completion OPT must be properly filed with the USCIS Service Center no later than the student's program end date.

### **Application Procedure for OPT**

- 1) I-765 (original) marked with the code "(c)(3)(i)" at item # 16
- 2) \$340 filing fee payable to "DHS" (effective July 30, 2007)
- 3) Photocopy of the I-94 card (both front and back)
- 4) Two photographs
- 6) Photocopy of your current I-20, with DSO recommendation for OPT
- 7) Photocopy of your passport biographical and visa pages
- 7) Photocopies of all your previous I-20 forms
- 8) Photocopy of your previous EAD (if applicable)

For the anticipated start date of your employment, you may choose as early as the day after your required coursework is completed, or as late as the 60 days after completion of your coursework. Using the previous example, if your date of completion is May 17, you may request a start date as early as May 18, or as late as July 17.

Please note: As of July 1, 2007 it is taking the USCIS California Service Center approximately three months to process your application, so you should apply at least three months before you want to begin your employment.

Your lawful F-1 status expires 60 days after the date you complete degree requirements and you are expected to leave the country by that date unless you file a timely application for practical training or make other arrangements to lawfully remain in the United States.

### **Curricular Practical Training (CPT)**

Curricular Practical Training (CPT) is off-campus, paid employment that is a required or integral part of your curriculum. CPT may be a type of internship or practicum required by your major. CPT is not available for all academic majors. Refer to the LPC catalog, or consult with your academic advisor regarding internships or practical experience for your degree. CPT must be "an integral part of an established curriculum" and can be part-time or full-time depending on the individual institution's curriculum. Please note that at LPC, only part time CPT is authorized.

#### **General Requirements**

- You must have been in F-1 status for at least one full academic year (Spring and Fall Semesters)
- Must be required for program completion or offered as an optional course

### Consulates in the S.F. Bay Area

<b>Brazil</b>	<b>Philippines</b>
300 Montgomery Street	447 Sutter Street
Suite 900	San Francisco, CA 94115
San Francisco, CA 94104	Phone: 415-433-6666
Phone: 415-981-8170	Web:
Web: <a href="http://www.brazilsf.org">www.brazilsf.org</a>	<a href="http://www.embassyonline.com/consular/index.htm">www.embassyonline.com/consular/index.htm</a>
<b>Canada</b>	<b>Germany</b>
550 South Hope Street 9 <sup>th</sup> Floor	1960 Jackson Street
Los Angeles, CA 94104	San Francisco, CA 94109
Phone: 213-346-2700	Phone: 415-775-1061
Web:	Web:
<a href="http://www.cdnconsulatla.com/eng/aboutus.htm">www.cdnconsulatla.com/eng/aboutus.htm</a>	<a href="http://www.germany.info/relaunch/info/missions/consulates/sanfrancisco/sanfrancisco.html">www.germany.info/relaunch/info/missions/consulates/sanfrancisco/sanfrancisco.html</a>
<b>China</b>	
1450 Laguna Street	<b>Mexico</b>
San Francisco, CA 94115	970 Market Street, Suite 528
Phone: 415-674-2900	San Francisco, CA 94102
Web: <a href="http://www.chinaconsulatesf.org">www.chinaconsulatesf.org</a>	Phone: 415-392-5554
	Web: <a href="http://www.sre.gob.mx/sanfrancisco/">http://www.sre.gob.mx/sanfrancisco/</a>
<b>Indonesia</b>	
1111 Columbus Avenue	<b>Peru</b>
San Francisco, CA 94104	870 Market Street, Suite 579
Phone: 415-392-4214	San Francisco, CA 94102
Web: <a href="http://www.kbri.org">www.kbri.org</a>	Phone: 415-362-5185
	Web: <a href="http://www.peruemb.org">www.peruemb.org</a>
<b>Italy</b>	
2590 Webster Street	<b>Spain</b>
San Francisco, CA 94115	1405 Sutter Street
Phone: 415-931-4924	San Francisco, CA 94109
<a href="http://www.itacons-sf.org">www.itacons-sf.org</a>	Phone: 415-922-2995
	Web: <a href="http://www.spainemb.org">www.spainemb.org</a>
<b>Japan</b>	
50 Fremont Street, Suite 2300	<b>Thailand</b>
San Francisco, CA 94105	611 North Larchmont Boulevard, 2nd Floor
Phone: 415-777-3533	Los Angeles, CA 90004
Web: <a href="http://www.cgjsf.org">www.cgjsf.org</a>	Phone: 323-962-9574
	Web: <a href="http://www.thai-la.net">www.thai-la.net</a>
<b>Korea</b>	
3500 Clay Street	
San Francisco, CA 94118	
Phone: 415-921-2251	
Web: <a href="http://www.koreanconsulatesf.org/">www.koreanconsulatesf.org/</a>	

For other countries or more information, please come to the International Student Program office.

## Immigration Status FAQ

### **How many units do I need to take to maintain my legal student status?**

At least 12 units, unless authorized by a Designated School Official (DSO) for less than full-time.

### **Under what circumstances can I take fewer than 12 units?**

In all cases you must get permission from the DSO BEFORE dropping below 12 units. U.S. Immigration and Customs Enforcement (ICE) allows students to drop below 12 units with PRIOR permission from the DSO for the following reasons ONLY:

- 1) Illness or Medical Condition. This is when a student has medical problems and proof from a doctor that they should take below 12 units. A student is allowed to be below 12 units for medical reasons for a total of two semesters ONLY. If a student is sick longer than two semesters for whatever reason, they may not be below 12 units or must leave the United States because they are not making regular progress towards their degree. Student must have medical proof (from a doctor, osteopath, psychologist or psychiatrist ONLY) for the semester(s) and must present documentation to the DSO for inclusion in his/her file.
- 2) Initial Difficulty with English Language. Usually this reason will only be acceptable during the first semester.)
- 3) Initial Difficulty with Reading Requirements.
- 4) Unfamiliarity with American Teaching Methods. Student is having difficulty adjusting to the new educational system. (Usually, this only can be used the first semester in school in the United States.)
- 5) Improper Course Level Placement
- 6) To Complete Course of Study in Current Term. It is the student's last semester and he or she needs fewer than 12 units to complete their program.
- 7) Part Time Border Commuter Students. For students living in Canada or Mexico but studying in the United States.

### **What happens if I drop a class and then am enrolled in less than 12 units?**

Unless you have been authorized to drop below full-time, you will be considered as "out of status" by the Department of Homeland Security (DHS). This will be recorded in SEVIS, and you will be subject to deportation and possible future exclusion from the United States.

### **How many online courses can International students take?**

The law states that International students with F-1 status may take 1 course or 3 units of online or distance education per semester while in the United States. Of course, if the student is outside the United States they may take as many as they like.

### **I've finished my program. How long can I stay in the U.S.?**

If you have completed your program and are not transferring to another school in the U.S. you have a 60 day grace period in which to pack up your belongings, say good-bye to friends and possibly travel before you return to your home country.

### **I want to take a trip to Canada or Mexico. What documents do I need to take with me?**

Please see the section on Traveling to Canada or Mexico.

### **Can I work off-campus?**

You are allowed to work off-campus only with permission from the U.S. Citizenship and Immigration Services (USCIS). See the Employment section for more information.

**Can I work on-campus?**

Yes. All F-1 students are allowed to work on-campus. You must limit your employment to 20 hours or less while school is in session, but you are allowed to work full-time during school breaks.

**Can I do volunteer work with an F-1 visa?**

Yes. Just be careful that you receive nothing in exchange for your services. This includes free room and board, transportation expenses, etc. Any activity that is normally financially rewarded is considered as work by the DHS.

**Can my spouse and/ or children who are in F-2 status accept employment?**

No. Holders of F-2 visas cannot accept either on or off campus employment.

**Can my F-2 spouse take classes at LPC?**

According to the DHS regulations, an F-2 dependent may not engage in full time study and may only engage in study that is avocational or recreational in nature. This would include allow study done as a hobby or study of an occasional, casual or recreational nature that is not counted towards a degree requirement. If an F-2 dependent wishes to study full-time, they should come to the ISP Office to discuss Changing their Status to F-1 Student.

**My visa is expiring soon. What should I do?**

The visa stamp in your passport is an "entry permit" only, so you need not be concerned if it expires once you have already entered the U.S., unless you plan to travel out of the U.S. and reenter. In that case, you will need to go to the U.S. Embassy or Consulate (preferably in your home country) and apply for a new visa stamp. When you go to the Consulate to apply for the new visa stamp, you must bring with you your endorsed I-20. It must be endorsed on the back by one of the DSOs at the International Student Program Office at LPC. It is also recommended that you bring proof that you have the funding to cover your tuition and living expenses.

**My I-20 is expiring soon. What should I do?**

Come to the ISP Office with an updated Financial Statement (within 90 days) so that we may Extend your Program and issue you a new I-20. Failure to extend your program before your program end date will result in your being "out of status".

**How do I contact the U.S. Citizenship and Immigration Services (USCIS)?**

1-800-375-5283 (no charge to caller)

**Where is the nearest USCIS Office?**

The nearest USCIS District Office is the San Francisco District Office, located at:  
444 Washington Street  
San Francisco, CA 94111

The mailing address is:

USCIS  
630 Sansome Street  
San Francisco, CA 94111

This office is not open at all times, for all services. You must schedule an appointment on the USCIS web site via INFOPASS at <http://infopass.uscis.gov/> to visit this office and to speak with an Immigration Information Officer.

**Where can I get legal assistance?**

Come to the ISP Office for a list of recommended Immigration attorneys.

**Do I have to classes in the Summer?**

No. Summer is an optional term and is considered a vacation.

**What happens if I fall “out of status”?**

This information is recorded in SEVIS and you will be subject to deportation and possible future exclusion from the United States. You will be expected to either depart from the U.S. as soon as possible or file an application for “Reinstatement”. Please come to the ISP Office for more information.

**I have visa questions that are not answered here. What should I do?**

Come to the ISP Office in Room 1502 during office hours and speak to an advisor.



## II. Health Matters

### Health Care

If you become sick or are injured and you need to see a doctor, it is recommended that you go to the Las Positas College Student Health Center to receive medical treatment. Many insurance plans waive or reduce your deductible if you are first seen and then referred to another facility by the Student Health Center.

#### **What to do if you are sick:**

If you become ill or have an injury, you should first decide how serious it is. Then follow the appropriate steps.

#### **Life threatening emergency:**

Call **911** and tell the operator where you are. An ambulance will pick you up and bring you to the hospital.

#### **Urgent care problem:**

Go to the Emergency Room (ER) of the nearest hospital. The nearest E.R. is at:

- **Valley Care Medical Center**  
5555 West Las Positas Boulevard  
Pleasanton, CA 94588

#### **Normal Medical Problem:**

Call or visit the Las Positas Collage Student Health Center to make an appointment. The Student Health Center is located in Building # 1700. For more information visit the website at <http://www.laspositascollege.edu/healthcenter/index.php>

When you go to the doctor, always make sure that you have your insurance ID card, your passport or other government issued ID, a bilingual dictionary, and traveler's checks, personal checks or a credit card (in case you need to pay for the medical service you receive) with you. You should show your insurance ID card to the registration desk at the doctor's office or hospital.

If the Student Health Center is closed, and you would like to be seen, you can call to make an appointment with an outside doctor. Keep in mind that with many Student Health Insurance plans, you can save money by first going to the Student Health Center, and then receiving a referral to another doctor, and that you will save money by going to a doctor that is part of your health insurance network.

## Health Insurance in the U.S.A.

Although you may be healthy, you can never predict a serious illness or accident. If you do need medical care, particularly if it is a chronic or serious condition, it will be expensive. Medical care in the U.S. is good, but more costly than any other country (it can cost \$10,000 per day in a hospital). Large unpaid medical bills will seriously affect your financial status and could affect your ability to continue with your education. This is particularly true for International students as the government support agencies will not assist in the payment of your medical bills. Therefore, all Las Positas College International students are required to purchase medical insurance. Coverage must include repatriation and medical evacuation and must be continuous throughout the semester. Proof of continual insurance coverage must be presented to the International Student Program Office by the end of the second week of classes. Failure to do so may result in dismissal from the college.

We strongly recommend that you purchase a health insurance policy that:

- provides a minimum of \$250,000 for each accident or illness
- has a deductible of \$100 or less, and
- covers at least 75% of hospital and medical costs

### Important Health Insurance Vocabulary

Important words and concepts to understand about your insurance plan coverage.

**Co- insurance** – the amount you pay after you have paid your deductible, for any illness or injury. This is usually given as a percentage, such as 20%.

**Co- pay** – similar to a deductible, this is the amount of money you must pay first before the insurance will cover any medical expense. Usually a co-pay or co-payment is paid directly to a doctor's office or pharmacy for drugs.

**Deductible** – the amount you pay first before the insurance company will pay for your illness/injury, usually per year.

**Exclusions** – illness, injury, or medical conditions that the insurance does not cover. This may include routine or preventative exams, immunizations, injuries sustained while playing in intercollegiate sports.

**Generic** – medicine that consist of the actual ingredients of a better-know trademarked medication. Because generic drugs are not protected by a trademark, they are considerably less expensive than other well-known medications.

**HMO** (Health Maintenance Organization) – you are assigned a Primary Care Physician (PCP) and must go through this doctor for any and all referrals to other specialists. Members pay a small, predetermined co-payment each time they receive health care services. HMOs offer minimal paperwork and low, predictable out-of-pocket costs.

**Medical Evacuation/ Repatriation** – this is coverage for a medical condition that warrants immediate transportation from the medical facility where you are located to the nearest adequate medical facility where medical treatment can be obtained.

**OTC** – (over the counter) – drugs/medicine that is available at a drug store or supermarket that you can buy easily and without a prescription.

**PCP** (Primary Care Physician) – If you are insured with a HMO plan, you will need to go through your contracted PCP for a referral to any other treatment for medical care.

**Period of coverage** – the amount of time for which you will receive medical insurance.

**PPO** (Preferred Provider Option) – you can choose the doctor within a preferred provider network for the maximum coverage. This is a plan that offers an even wider selection of physicians to members than an HMO plan. These participating providers may be primary care doctors or specialists and PPO members are free to see any of them. PPO members may also visit non-contracted providers, but at a higher out-of-pocket cost.

**Pre-existing condition** – an illness, injury, or medical condition that occurred before you had medical insurance. See your insurance plan for more information on how they define and cover a pre-existing condition.

**Premium** – the amount you pay for the insurance each month.

**Prescription** – a letter or memo from a doctor authorizing you to take a certain drug or medicine. These are usually stronger than OTC drugs.

**Provider network** – a select group of doctors or hospitals that an insurance plan is part of. By selecting a physician in this network, your insurance will cover more than if you see a physician outside of this network.

**Repatriation expense coverage** – the return of you or your bodily remains or ashes in case of death, to your home country or country of residence.

### **Some Insurance plans recommended by the International Student Program Office**

- **Compass** – International Student Scholar Health Insurance Plan – [www.compassbenefit.com](http://www.compassbenefit.com)
- **Gateway USA** – [www.gatewayplans.com](http://www.gatewayplans.com)
- **ISO Med** - <http://www.isoa.org/default.aspx>
- **Seven Corners** (formerly Specialty Risk International) – Liason International Plan – [www.SpecialityRisk.com](http://www.SpecialityRisk.com)
- **Study USA HealthCare** – [www.travelinsure.com](http://www.travelinsure.com)
- **Wells Fargo Insurance Services** – (formerly Accordia Somerton Student Insurance Services) International Student Health Insurance Plan – <https://www.somerton-ins.com/default.aspx>

### **Dental Insurance**

- **Smilechoice** – <http://www.studentdental.com/>
- **Smilesaver** – <http://www.safeguard.net/sm/smwelcome.html>

## Pregnancy Vocabulary



**Active Labor** - The period of time when your cervix dilates between 4 and 8 centimeters. Contractions usually come between 3 and 5 minutes apart, dilating the cervix approximately 1 centimeter per hour.

**Amniocentesis** - Withdrawal of amniotic fluid, usually performed through the abdominal wall using a needle. This is a test to see the health of the baby. Also known as “amnio”.

**Breech** - A position of the baby where the feet or behind are down, instead of the head. Occurs in about 4% of term pregnancies. Also known as “feet first delivery”.

**Contraction** - The regular tightening of the uterus, working to dilate and efface (widen and thin) the cervix and to push the baby down the birth canal. This is usually painful for the mother. However, whether or not a contraction is painful should not be used as a measure of its effect on dilation.

**Cesarean section** - Surgical birth to remove the baby from the uterus via the abdomen. Done for emergencies like cord prolapse, placenta previa, etc. Also called C-section, section, CS, cesarean, or surgical birth.

**Cervix** - The lower section (the 'neck') of the uterus, which protrudes into the vagina and dilates and effaces (widens and thins) during labor to allow the passage of your baby. The cervix is usually about 2 cm long and has a small opening at the end - about the size of a pinhead - which will dilate (widen) and efface (thin) during labor. The cervix, while far back in the vagina, can be reached during an internal exam.

**Demerol** - Trade name for the drug, meperidine hydrochloride, a white, odorless, crystalline compound, soluble in water, having a neutral reaction and an analgesic effect similar to that of morphine. Aids in pain relief during labor.

**Dilatation** - The enlarging of the cervix to 10 centimeters.

**Due date** - The expected date of confinement (pregnancy). The average pregnancy is calculated from the last menstrual period (LMP), by adding 280 days. Many pregnancies go beyond this time period or before this arbitrary date.

**Episiotomy** - Incision or surgical cutting of the perineum during childbirth to ease the passage of the baby during labor.

**Effacement** - This refers to the thinning of the cervix in preparation for birth, and is expressed in percentages. You'll be 100% effaced when you begin pushing.

**Epidural** - Anesthesia (drug) used for labor, birth, cesarean section, and other procedures including removal of cerclage taken during labor to ease the mother's pain

**Fetus** - Developing offspring in the uterus, generally from 10 weeks to birth.

**Forceps** - Metal tongs used to assist with the delivery of a baby.

**Fetal Monitor** - An ultrasound device used in labor and in non-stress testing to monitor the baby's heart rate and contractions. Usually done without the aid of a human.

**False Labor** - A period of contractions that does not lead to the changes in the cervix associated with the birth of your baby.

**Gynecologist** - A doctor specializing in the diseases and hygiene of a woman

**Jaundice** - A somewhat common condition in newborn babies, marked by a yellowing of the skin and caused by the immature liver's inability to process excess red blood cells.

**Induction** - To artificially start labor for medical reasons. Also referred to as to be induced.

**Labor** - The period of contractions that change the cervix and ends with the birth of your baby. The actual process the mother goes through in childbirth.

**Maternity** - Something related to motherhood.

**Maternity Ward** - Hospital facility for the care of women before and during childbirth and for newborn babies.

**Morning Sickness** - Pregnancy symptom characterized by nausea and or vomiting. This can happen at any point during the day, despite the name.

**Obstetrician** - Medical doctor who specializes in the care of pregnant women. Also called OB or OB/GYN

**Perineum** - The area between the external genitalia and the anus.

**Pediatrician** - Doctor who specializes in the care of children.

**Postpartum** - The period of time after the birth of your baby, where your body recovers from pregnancy. Technically lasts 6 weeks.

**Pregnancy** - The 40 week period of developing a baby.

**Placenta** -The organ within the pregnant uterus through which the fetus derives its nourishment; at term it averages one-sixth the weight of the fetus; is disk-shaped, about 2.5 cm thick, and 17.5 cm in diameter.

**Station** - How far the baby is "down" in the pelvis. Stations are measured in centimeters in negative and positive numbers. -3 is a floating baby, 0 station is said to be engaged in the pelvis, and +4 is crowning. The "station" refers to the level of the presenting part (in most cases, the baby's head) in relation to the ischial spines of the pelvis.

**Stretch marks** - Areas where the skin has stretched to accommodate the pregnancy or weight gain. Most common on the abdomen, hips and breasts.

**Term** - The length of a pregnancy. A full term is a pregnancy that lasts for the entire 40 weeks.

**Trimester** - Each three-month period during the nine months of pregnancy, broken down roughly as follows:

First trimester: Fertilization to the end of 12th week

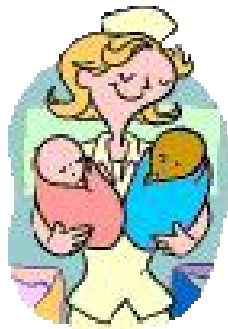
Second trimester: Week 13 to end of 24th week

Third trimester: Week 25 until term

**Umbilical Cord** - The cord that connects the placenta to the baby, it helps removes waste products and delivers oxygen and nutrients to the baby.

**Uterus** - Female reproductive organ that weighs about 2-3 ounces and is about the size of a small woman's fist prior to pregnancy. During pregnancy this organ becomes 10 by 14 inches and weighs in at about 2-3 pounds. This is where a normal pregnancy takes place. Also known as the womb.

**Vagina** - The canal that leads from the uterus to the external opening of the female sex organs.



## Resources for Students with Children

### Child Care

- Child Care Links  
1020 Serpentine Lane #102, Pleasanton  
(925) 417-8733  
[www.childcarelinks.org](http://www.childcarelinks.org)

### Parks

- Emerald Glen Park (Tassajara Road and Central Parkway) - Dublin
- Sports Recreation Park – Pleasanton
- Robertson Park – Livermore
- Central Park – San Ramon

### Schools

- Dublin Unified School District - <http://www.dublin.k12.ca.us/www/index.jsp>
- Livermore School District - <http://www.livermoreschools.com/>
- Pleasanton School District - <http://www.pleasanton.k12.ca.us/>

### Stores

- Babies R Us – 4990 Dublin Boulevard, Dublin
- Baby Depot at Burlington Coat Factory – 6900 Amador Valley Boulevard, Dublin
- Marshalls – 7896 Dublin Boulevard, Dublin
- Ross – 7886 Dublin Boulevard, Dublin
- Target
  - 7200 Amador Plaza Road, Dublin (925) 829-8900
  - 4300 Las Positas Road, Livermore (925) 606-1445
- Wal-Mart
  - 4501 Rosewood Drive, Pleasanton (925) 734-8744
  - 2700 Las Positas Road, Livermore (925) 455-0215

### Stress Hotlines

Parental Stress Services – 1-510-893-5444

### Websites

Berkeley Parents Network - <http://parents.berkeley.edu/>

This web site contains thousands of pages of recommendations and advice contributed by members of the Berkeley Parents Network, a parent-to-parent email network for the community of parents in the Berkeley, California area. Formerly called "UCB Parents", this network is run by a group of volunteer parents in their "spare" time. They send out 10-12 email newsletters each week to 19,070 local parents. They've been doing it since 1993. Many busy parents have taken the time to share their suggestions, wisdom, and experience, and it is archived here for all who need it.

Baby Center – [www.babycenter.com](http://www.babycenter.com)

Livermore Moms Club – [www.livermoremomsclub.com](http://www.livermoremomsclub.com)

## Important Emergency Phone Numbers

For Life Threatening Emergencies, call: **911**  
No money is necessary when using a public telephone.

Important Note: Calling 911 from your cell phone will automatically send your call to the California Highway Patrol. If you need the Police or Ambulance, or Fire Department, and you are not on the highway, it is best to call from a regular landline phone.



Dublin Police	(925) 833-6670
Livermore Police	(925) 371-4900
Pleasanton Police	(925) 931-5100
San Ramon Police	(925) 973-2779

We recommended that you have these numbers readily available and program them into your cell phone.

### Campus Phone Numbers

Campus Safety and Security Emergency Emergency call boxes)	(925) 424-1699 (*16 from Campus pay phones and
Health Center	(925) 424-1830
Crisis Counselor	(925) 424-1400

### Community Phone Numbers

#### AIDS / HIV

HIV/ AIDS Hotline: 1-800-367-2437 (no charge to caller)

#### Alcohol and Drug Abuse

Drug and Alcohol Abuse Treatment Hotline 1-800-374-2202 (no charge to caller)

#### Family Planning

San Ramon Valley Clinic (Planned Parenthood) (925) 838-2108

#### Mental Health and Crisis Intervention

Alameda County Behavioral Health Care Services	1-510-567-8100
Suicide Prevention and Crisis Support Services of Alameda County	1-800-309-2131 (24 Hours)

#### Poison Control

Poison Control 1-800-222-1222 (no charge to caller)

#### Rape and Sexual Assault

Tri-Valley Haven Crisis Hotline	(925) 449-5842 (24 Hours)
National Sexual Assault Hotline	1-800-656-HOPE (no charge to caller)

### III. Safety Issues

#### Safety Concerns

The increase of crime in U.S. cities makes safety a primary concern, especially for students from areas where crime is not as prevalent. The following tips may make your stay in the Tri-Valley area safer.

If you go out at night, it is better to go accompanied by a friend. Walk only in well-lighted areas where there are other people.

For your own safety and for the peace of mind of your friends and relatives, always tell someone where you are going when you go out. Do so even if you are going on a date.

Do not leave the door of your apartment unlocked. Always ask “who is it?” before answering the door. Do not open the door to strangers.

Be sure to lock your car and keep your windows up. Before approaching your car, be sure that you have your keys in your hand so that you do not fumble and start looking for them outside your car. Before entering your car, check that no one is in the back seat or hiding under your car.

Do not carry large amounts of cash with you. Most U.S. Americans do not carry more than \$100 at any time. It is much safer to carry less cash and get more from a local Automated Teller Machine (ATM) when you need it.

Do not use ATMs at night or in isolated areas. Use mirrors at ATMs to make sure that no one is watching you. Always cover the numbers as you are punching in your Personal Identification Number (PIN). Do not leave your ATM receipt in the machine or on the ground. Take it with you.

If you are stopped by the police while driving a car, do not get out of the car. Wait until the police officer approaches you in your car and put your hands on the top of the steering wheel so they can be seen by the officer.

Learn to say “No”. In some cultures, it is impolite to say no, but in the U.S., it is important to express yourself clearly. It’s ok to say “Yes” or “No”. U.S. Americans may not understand if you are indirect and “beat around the bush”.

#### Earthquake Safety

##### Inside

- When you feel an earthquake, duck under a sturdy object like a desk or bed and hold on to it.
- If you are not near a sturdy object, duck and protect your head with your arms.
- Avoid windows, filing cabinets, bookcases, and heavy objects that could shatter or fall.
- Watch out for falling plaster, ceiling tiles, and light fixtures.
- Stay under cover until the shaking stops, then evacuate the building.



- Use stairs only, do not use elevators.

#### Outside

- Move away from trees, signs, buildings, electrical poles and wires.
- Protect your head with your arms from falling bricks, glass, plaster, and other debris.
- Move away from fire and smoke.

#### **Disaster Safety**

Have an Emergency Kit for your home and car. You should be prepared in the event of a major emergency to be self-sufficient for 3 days or 72 hours before police can help rescue. For ideas on stocking your emergency kit, go to [www.72hours.org](http://www.72hours.org) or visit the website of the American Red Cross at [www.redcross.org](http://www.redcross.org).

Another helpful website from the U.S. government is [www.ready.gov](http://www.ready.gov).

Please also remember to register your current local address with your nearest consulate. This will help with your government's effort to locate you in the event of an emergency.

## **Sexual Assault and Rape**

Las Positas College cares about you and your well being. We are providing this information in the event that you are a victim of violence.

### **What everyone should know about Date and Acquaintance Rape**

- Trust your instincts. If someone does not listen to you or makes you feel uncomfortable, you may be in danger.
- Even if the person doesn't use physical force, it can still be rape.
- Everyone has the right to say "No" to sex at any time.
- "No always means "No".
- If you are the person being told "No", you need to respect it.
- Date rape is not an act of passion. It is a crime of violence
- The most common date rape drug is alcohol.
- If you are raped, get help right away.
- See a doctor immediately, before you take a shower.

### **What can I do to reduce my risk of sexual assault?**

- Don't leave your beverage unattended or accept a drink from an open container.
- When you go to a party, go with a group of friends. Arrive together, watch out for each other, and leave together.
- Be aware of your surroundings at all times.
- Don't allow yourself to be isolated with someone you don't know or trust.
- Think about the level of intimacy you want in a relationship, and clearly state your limits.

### **What should I do if I am sexually assaulted?**

- Call 911
- Report the rape to law enforcement authorities.
- Call the National Sexual Assault Hotline, operated by RAINN, for free, confidential counseling, 24 hours a day: 1-800-656-HOPE.
- Find a safe environment – anywhere away from the attacker. Ask a trusted friend to stay with you for moral support.
- Preserve evidence of the attack – don't bathe or brush your teeth. Write down all the details you can recall about the attack and the attacker.
- Get medical attention. Even with no physical injuries, it is important to determine the risks of Sexually Transmitted Disease (STD) and pregnancy.
- To preserve forensic evidence, ask the hospital to conduct a rape kit exam.
- If you suspect you may have been drugged, ask that a urine sample be collected. The sample will need to be analyzed later on by a forensic lab.
- Remember that it wasn't your fault.
- Recognize that healing from rape takes time. Give yourself the time you need.
- Know that it's never too late to reach out for help. Many victims do not realize they need help until months or years later.
- A counselor can provide the information you'll need to understand the healing process.

## IV. Living in the U.S.A.

### Housing Information

#### Apartments

##### Dublin

- **Amador Lakes** – 8015 North Lake Drive (925) 219-3244. [www.ForRent.com/amadorlakes](http://www.ForRent.com/amadorlakes) \$1230- \$1355/ month
- **Archstone** – Emerald Park 5095 Haven Pl, \$1362-\$2192/ month
- **Avalon Dublin** – 7904 Fall Creek Road, Dublin \$1125-1990/ month
- **Cotton Wood** – 6500 Cotton Wood Circle – 1-866-829-7058 [www.ForRent.com/cottonwood](http://www.ForRent.com/cottonwood)
- **Emerald Park** – 5050 Hacienda Drive – [www.emeraldparkapts.com](http://www.emeraldparkapts.com) 1-866-380-0643
- **The Groves at Dublin Ranch** – 4161 Keegan Street 1-866-611-9096. [www.thegrovesatdublinranch.com](http://www.thegrovesatdublinranch.com)
- **Ironhouse Trail** – 6233 Dougherty Road 1-877-510-7705
- **Parkwood**- 7300 Parkwood Circle (925) 829-8080. [www.forrent.com/parkwood](http://www.forrent.com/parkwood) \$1124-\$1810/ month
- **The Springs** – 7100 San Ramon Road – 1-866-248-4642
- **Waterford Place** – 4800 Tassajara Road. Dublin \$1300 – 2435/ month. 1-888-551-2420

##### Livermore

- **Autumn Springs** 1700 Paseo Laguna Seco. [www.ForRent.com/autumnsprings](http://www.ForRent.com/autumnsprings) 1-866-433-2103 \$1050-1190/ month.
- **Catalina Crest** 1038 Catalina Drive - (925)218-0915 \$925-1195/ month. [www.vasonamanagement.com](http://www.vasonamanagement.com)
- **Diablo Vista** – 1550 Springtown Blvd. [www.forrent.com/diablovisa](http://www.forrent.com/diablovisa)
- **Hidden Glen** – 1669 Catalina Court (925) 297-4341
- **La Vina Apartments** – 4601 Gerrilyn Way (925) 271-2443. [www.forrent.com/lavinaapartments](http://www.forrent.com/lavinaapartments)
- **Mill Springs Park** – 1809 Railroad Avenue (925) 297-4340. [www.ForRent.com/millspringspark](http://www.ForRent.com/millspringspark)
- **Portola Meadows** – 1160 Portola Meadows – (925) 219-3252
- **Rhonewood** – 5643 Charlotte Way - (925) 445-1944. [www.Rhonewood.com](http://www.Rhonewood.com)

##### Pleasanton

- **Archstone Hacienda** 1-866-288-8642
- **Civic Square** – 4800 Bernal Avenue (925) 215-3276 [www.ForRent.com/CivicSquare](http://www.ForRent.com/CivicSquare)
- **Del Prado** - 5196 Golden Road 866-727-3531
- **The Greenbriar** – 1552 East Gate Way # 126 1-866-831-9339. \$1475 - \$ 2200 [www.greenbriarhomes.com/rental](http://www.greenbriarhomes.com/rental)
- **Hacienda Commons** – 5000 Owens Drive [www.forrent.com/haciendacommons](http://www.forrent.com/haciendacommons). 1-866-830-2941 \$1065 – \$1360/mo
- **Las Ventanas** – 3819 Vineyard Avenue 1-866-454-9562
- **Pleasanton Glen** – 3955 Vineyard Avenue 1-877-378-1324 \$1225 - \$1790/month
- **Springhouse** – 5505 Springhouse Drive 1-866-848-5108. \$1135 - \$1410/ month [www.ForRent.com/springhouse](http://www.ForRent.com/springhouse)
- **Stoneridge** – 6250 Stoneridge Mall Road 1-866-559-3332
- **Valley Plaza Villages** – 4411 Valley Avenue 1-888-480-8665 \$1175 - 1475

- **Woodland Villas** – 4320 Valley Avenue 1-866-740-8022 [www.woodlandvillasapts.com](http://www.woodlandvillasapts.com)

### **Dormitories**

- California State University East Bay, Hayward Campus - <http://wwwsa.csueastbay.edu/~houseweb/>  
See pamphlets in the ISP Office for more information

### **Homestay Families**

- International Student Placements (ISP) – [www.isphomestays.com](http://www.isphomestays.com)
- Education Services International – [www.edservintl.com/](http://www.edservintl.com/)
- Orinda Homestay Program – Phone: 925-254-1191 Fax: 925-254-8124

### **Internet Resources**

[www.craigslist.org](http://www.craigslist.org) - click the “ebay” link and look at housing available  
[www.apartments.com](http://www.apartments.com)  
[www.rent.com](http://www.rent.com)  
[www.ehousing.com](http://www.ehousing.com)

### **Newspapers**

- Tri-Valley Herald - available free on campus
- The Valley Times
- East Bay Express – free paper available at many area stores
- San Francisco Chronicle – in the Classified section

Visit the International Student Program Office for a list of available housing that people in the area have told us about including people looking for roommates.



## Financial Matters

### Currency

The U.S. monetary system follows the decimal system. The dollar (\$) is the basic unit. Paper money, also called “bills”, comes in denominations of \$1 (also called a “buck”), \$5, \$10, \$20, \$50, \$100, \$500, and \$1000. Occasionally, you will see a \$2 bill. All paper money is the same size and color. It is generally safer and more efficient to carry small denominations of bills, since small stores may not be able to make change for \$100 bills. Automated Teller Machines (ATM) distribute \$20 bills.



Currency in the forms of coins is also called “change”. Coins come in the following 5 denominations:

- 1 cent = a penny
- 5 cents = a nickel
- 10 cents = a dime
- 25 cents = a quarter

Occasionally, you may see a 50 cent coin, also called a “half dollar”, and the \$1 coin. Coins are used for self-service vending machines selling soft drinks and candy. Coins are also used for public telephones and washing and drying machines at laundromats. Having correct change is important when using public transportation such as buses, trains, and subways.

### Banks

While in the United States, you should keep most of your money safely deposited in a bank, except for a small amount of money needed for daily expenses. Keeping large amounts of cash in your wallet or at your home can be very dangerous. To protect your money, and earn a little interest, we recommend that you open a bank account.

All bank accounts come with a cash card (also known as an ATM card). This card makes banking very easy. You can do your banking 24 hours a day at most locations. There are two types of accounts: a checking account and a savings account.

### Checking Accounts

A checking account is a bank account where you put your money and instead of paying for things with cash, you can write a check. Any business transactions such as paying for rent or tuition and other expenses or a large amount of money should be made by check, or paid with a credit card online. You should never send cash through the mail. You can pay for purchases with a check so long as you have the money in your account to cover the amount of the check you’ve written. To open an account, apply at the “new accounts” desk, explaining that you are a student who will be studying at Las Positas College. Be sure the person to whom you speak shows you how to write a check, register it in your book, and balance your account every month.

### Savings Accounts

If you have a large amount of money that will pay your expenses for several months or more, you should consider putting this money you don’t need immediately in a savings account. Banks use your money to make investments and pay you interest, a percentage of your savings in return for the privilege of using your money, if you maintain a minimum balance set by the bank. Apply for a savings account at the “new accounts” desk of the bank.

Many banks will require that you already have a U.S. Social Security Number (SSN) for tax identification purposes before you can open a checking or savings account. There are ways to

open a bank account without a SSN. Please come to the International Student Program Office if you experience any difficulty in opening an account without a SSN.

### **Receiving Money from Abroad**

Once you have opened an account, you can receive money from a foreign bank account by a "cable or wire transfer". You will need to give your family member or friend the Bank number and your Account number.

### **Where can I open a bank account?**

- **Bank of America**  
250 Dublin Boulevard, Dublin  
48 Railroad Avenue, Livermore  
13 1<sup>st</sup> Street, Livermore
- **Citibank**  
51 Portola Avenue, Livermore
- **Washington Mutual**  
4520 Dublin Boulevard, Dublin
- **Wells Fargo**  
4400 Tassajara Road, Suite A, Dublin  
235 South K Street, Livermore

### **Tipping**

Tipping for services is common throughout the U.S. The amount of tip should depend on the service you have received. There are 7 areas in which tipping is expected unless otherwise indicated. You should never offer tips to police officers, government employees, or public officials.

Baggage: 50 cents to \$1 minimum (unless otherwise indicated) per bag should be given to porters who carry luggage at airports, train stations, and bus terminals. \$1 per bag is a sufficient tip for the bellboy or porter who handles your suitcase at a hotel.

Barber and Beauty Shops: Tip 15% of the bill.

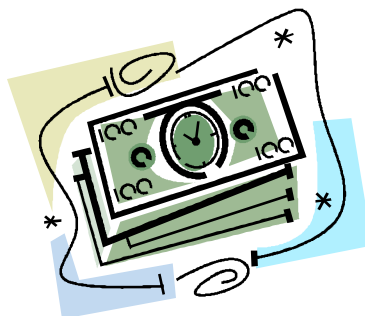
Bartenders: Tip 15% of the bill.

Hotels: Tip the doorman in relation to the service he performs. Tip chambermaids \$1 per person per day. 15% of the bill is an acceptable tip for meals served in your room.

Parking Valets: \$1.00

Restaurants: 15% of the total bill is customary in a restaurant where you are served by a waiter or waitress. Tip 20% if the service is extraordinary, and 10% if the service is poor. No tips are required in a cafeteria where people serve themselves, in fast food restaurants, or in snack bars.

Taxis: Tip 15% of the fare.



## Social Security Number



### What is a Social Security Number?

The Social Security Number (SSN) is to calculate a worker's retirement funds from the government. All those who are employed in the U.S. need a SSN because taxes are withheld for the Social Security fund. The SSN however has become a sort of "National ID" in the U.S. and an important identification document to do financial and other background checks. You may be asked for your SSN when applying for services such as opening a bank account or cell phone contract, renting an apartment, applying for a credit card, buying a car, or applying for a California Driver's License.

### How to Apply for a Social Security Card

As of October, 2004, the Social Security Administration will only grant a SSN to F-1 students who have a job as evidenced by a letter by an employer or a pay stub. If you think you may need a SSN for any reason, and are not working on campus, please come to the ISP as we can suggest some alternative ways for you to obtain the service you need. For those International students who have on-campus employment, you must apply for a Social Security card. Wait at least 10 business days after arriving in the U.S. before applying for a Social Security card as it takes approximately this long for your Arrival Card (I-94) to be entered into the national data base that the Social Security Administration checks. Applications must be made in person at a local Social Security Administration Office, after which the card is mailed within 4-6 weeks.

The following documents are required for applying for a Social Security card:

- 1) Offer of On-campus Employment Letter from your work supervisor
- 2) On-campus Work Authorization letter from the ISP
- 3) Completed Application for a Social Security Card (Form SS-5). The application forms are available at Social Security Administration offices or can be downloaded and printed at ([www.socialsecurity.gov/online/ss-5.pdf](http://www.socialsecurity.gov/online/ss-5.pdf)).
- 4) Passport
- 5) I-94 card
- 6) I-20

### Social Security Administration Locations:

You can see all the Social Security Administration Locations by visiting [www.ssa.gov](http://www.ssa.gov)

The nearest office to LPC is the Hayward Office.

24301 Southland Drive  
Suite 500  
Hayward, CA 94545

Office Hours M – F 9:00 am – 4:30 pm

#### Driving directions

Take I-880 to Winton Avenue. West Exit  
Take a left at first traffic light onto Southland Drive  
Office Building is next to the Southland Mall.



## California Driver's License and ID Card

### Do I need a California Driver's License to drive in California?

If you are a visitor to California and over 18 years old and have a valid driver's license from your country (where you live permanently), you may drive in this state without getting a California driver's license as long as your home license remains valid. Often, an International Driver's permit, which is an official translation of your driver's license, is helpful if you are ever questioned about your license.

If you make your home here or take a job or buy a car, you must apply to the Department of Motor Vehicles (DMV) for a California driver's license within 10 days. Residency is established by voting in a California election, paying resident tuition, filing for a homeowner's property tax exemption, or any other privilege or benefit not ordinarily extended to nonresidents.

### How to apply for a California Driver's License

You will need to pass a written test, vision exam, and driving test to receive a Driver's License.

To apply for an original driver license if you are over 18, you will need to do the following:

- Visit a DMV office (make an appointment for faster service at [www.dmv.ca.org](http://www.dmv.ca.org)).
- Complete application form DL 44 (An original DL 44 form must be submitted. Copies will not be accepted.) To obtain this form by mail, call DMV's automated phone service 24 hours a day, 7 days a week at 1-800-777-0133.
- Give a thumb print
- Have your picture taken
- You will be asked to provide your Social Security Number (SSN). It will be verified with the Social Security Administration while you are in the office. \*Please see Social Security Number information below if you do not have a SSN.
- Verify your birth date and legal presence. Your passport and I-94 will do this.
- Provide your true full name
- Pay the \$27 application fee
- Pass a vision exam
- Pass a traffic laws and sign test. There are 36 questions on the test. You have three chances to pass. Visit the DMV website at [www.dmv.ca.org](http://www.dmv.ca.org) for a Sample Test.

**Note:** To allow you sufficient time for testing, DMV will not be administering written exams after 4:30 p.m.

You will then be issued a permit if you have never been licensed before. When you practice, you must have an accompanying adult who is 18 years of age or older, with a valid California license. This person must be close enough to you to take control of the vehicle if necessary. It is illegal for you to drive alone.

If you have a license from another country, you will be required to take a driving test. If you have a license from another state, the driving test can be waived.

To take your driving test, you will need to:

- Make a driving test appointment. (Driving tests are not given without an appointment.) You may also call 1-800-777-0133 between the hours of 8 a.m. and 5 p.m. Monday-Friday, to make a driving test appointment.

- Provide proof of financial responsibility. You must show that your vehicle is properly insured by providing documented liability insurance before the driving test begins, or it will be postponed.

You have three chances to pass the driving test. If you fail, you may practice for a while, then make another appointment. There is no waiting period, but you must make an appointment. If you fail to successfully complete the driving test on the first attempt, you must pay a \$5 fee for each additional driving test that is administered under an application for an original or renewal driver license.

After you pass your driving test you will be issued an interim license valid for 60 days until you receive your new photo license in the mail. Double-check your address before you leave DMV and tell the DMV representative if you have moved or if your address is incorrect. If you have not received your license after 60 days, call 1-800-777-0133 and they can check on the status for you. Have your interim license with you to provide information when requested.

If your name is different on your birth date and/or legal presence document than the one you are currently using, you will also need to provide an additional acceptable document to establish your true full name, such as; a marriage certificate, dissolution of marriage, adoption or name change document that shows your current name.

### **Identification (ID) Card**

Instead of carrying and risk losing your passport to prove your identity, if you don't plan on driving, you should consider getting a California ID card. This card looks exactly like the driver's license and is an official form of identification.

### **How to apply for or renew an identification (ID) card**

DMV issues a regular ID card that is valid for six years.

To apply for an ID card you will need to do the following:

- Visit a DMV office or make an appointment online for faster service. To make an appointment on line, go to [www.dmv.ca.gov](http://www.dmv.ca.gov) then click the online services tab.
- Complete application form DL 44 (An original DL 44 form must be submitted. Copies will not be accepted.)
- Give a thumb print
- Have your picture taken
- Provide your social security number. It will be verified with the Social Security Administration while you are in the office. \* Please see Social Security Number information below if you do not have a SSN.
- Verify your birth date and legal presence. Your passport and I-94 will do this.
- Pay the \$22 application fee. The DMV accepts payment by check, money order, cash and ATM/Debit cards. Credit cards are not accepted in DMV offices.

Double check your address before you leave DMV and tell the DMV representative if your address is incorrect. Your new ID will be mailed to you within 60 days. If you have not received your ID after 60 days, call 1-800-777-0133 and they can check on the status for you. Have your receipt and/or old ID card with you to provide information when requested.

**Social Security Number (SSN) requirement**

The Social Security Act allows any state to use the SSN to establish the identification of an individual. The California Vehicle Code requires the collection of the social security number. All applicants must submit to DMV their social security number. Evidence of your social security number is required only on applications for an original commercial driver license and any request to correct a SSN that is already on the driver record data base, regardless of the class. The SSN is considered confidential and will not appear on the photo license or be encoded on the magnetic stripe. Any documents that the department is authorized to release to the public will have the SSN masked. The SSN is electronically verified with Social Security Administration while you are in the DMV office for all DL/ID card transactions, if it has not already been verified.

**Exception to the SSN requirement:**

If you are legally present in the US, but ineligible for an SSN, you are exempt from SSN requirements. However, you must still provide an acceptable birth date/legal presence document for any DL/ID card application OR provide a valid SSN.

**Birth date verification and legal presence requirements**

State law requires every applicant for an original California identification (ID) card and driver license to show verification of birth date and proof of legal presence within the United States to help safeguard the accuracy and integrity of departmental documents.

The following documents are acceptable:

- Valid foreign passport with a valid Record of Arrival/Departure (form I-94)
- Employment Authorization Card
- Valid I-94 with attached photo stamped "Processed for I-551 temporary evidence of lawful admission for permanent residence"
- Notice of Action (I-797 Approved Petition)

**Department of Motor Vehicles (DMV)**

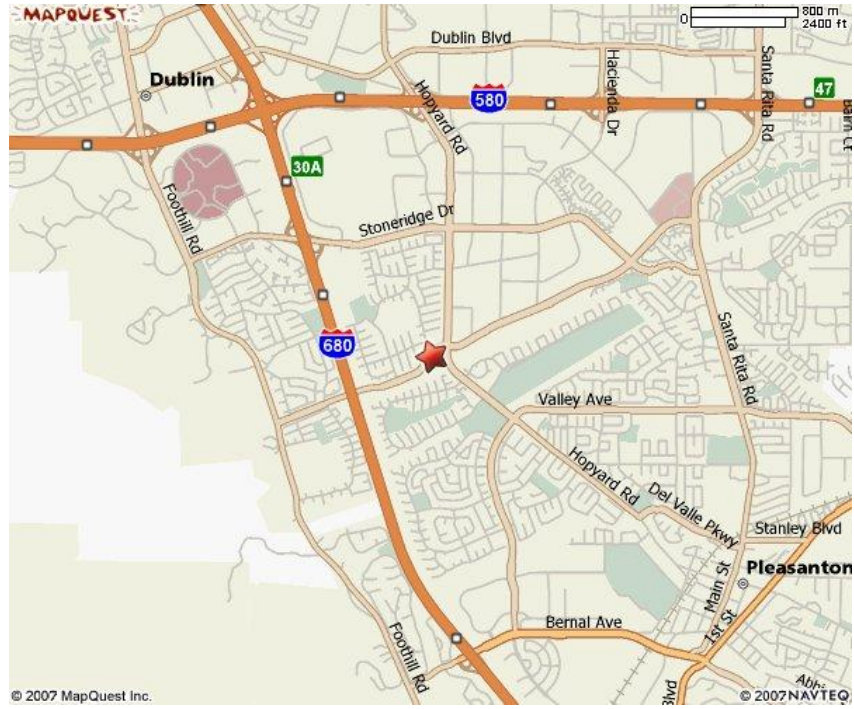
The nearest office to Las Positas Collage is the Pleasanton Office.

6300 W. Las Positas Blvd.  
Pleasanton, CA 94588  
1-800-777-0133

Open M, Tu,Th, F 8:00 am – 5:00 pm  
W 9:00 am to 5:00 pm

The DMV office provides Saturday service the third Saturday of each month from 8:00 am to noon.

Check the website to see which holidays the DMV will be closed.



Other offices are in Hayward, Fremont, and Oakland. Visit [www.dmv.ca.gov](http://www.dmv.ca.gov) for more information.

## Places of Worship

### Buddhist

- Buddhist Church of Oakland Jodo Shinshu-Nishi Hongwanji - 825 Jackson Street, Oakland (510) 832-5988

### Christian

#### Baptist

- Parkway Baptist Church – 7485 Village Parkway, Dublin (925) 829-0359

#### Catholic

- St. Raymond -1555 Shannon Avenue, Dublin (925) 828-2460
- St. Elizabeth Seton - 4001 Stoneridge Drive, Pleasanton (925) 484-5020
- St. Michael's Church - 458 Maple, Livermore (925) 447-1585
- St. Augustine – 3999 Bernal Avenue, Pleasanton (925) 846-4499



#### Episcopal

- St. Clare's Episcopal Church – 3350 Hopyard Road, Pleasanton (925) 462-4802
- St. Bartholomew's Episcopal Church – 678 Enos Way (off Portola), Livermore (925) 373-9564

#### Lutheran

- Trinity Lutheran Church - 1225 Hopyard Road, Pleasanton (925) 846-6363
- St. Philip Lutheran Church - 8850 Davona Drive, Dublin (925) 828-2117

#### Presbyterian

- Tri-Valley Presbyterian Church – 5925 West Las Positas Boulevard, Pleasanton (925) 227-0880

#### United Methodist

- Grace United Methodist Church – 19901 San Ramon Valley Boulevard, San Ramon (925) 828-8686

### Hindu

- Shiva - Vishnu Temple - 1232 Arrowhead Avenue, Livermore

### Islam

- Muhammad Mosque No. 26 – 5277 Foothill Boulevard, Oakland (510) 436-0206

### Jewish

- Chabad Jewish Center for the Tri-Valley - 6101 Via De Los Cerros, Pleasanton (925) 846-0700



## Public Transportation

For Information about trains, bus or ferry service in the Bay Area, visit [www.511.org](http://www.511.org) or call 511.

### Bay Area Rapid Transit (BART)

Convenient to the College is the Bay Area Rapid Transit (BART), with local buses connecting to the College and surrounding communities. The BART system will provide you with the opportunity to travel all over the Bay Area including the cities of San Francisco, Berkeley, Oakland and Walnut Creek. Visit [www.bart.gov](http://www.bart.gov) for more information. The hours of service are from early morning to midnight. There is direct service between San Francisco and Dublin/Pleasanton.



### Wheels Bus

WHEELS is a service of the Livermore Amador Valley Transit Authority (LAVTA) and provides public transportation for the Tri-Valley communities of Dublin, Livermore and Pleasanton. The Number 12 Bus Line goes from the Dublin/ Pleasanton BART Station to LPC, and also connects to the Transit Center in Livermore. Visit [www.wheelsbus.com](http://www.wheelsbus.com) or call (925) 455-7500 for more information.

## General Frequently Asked Questions (FAQ)

### What is interesting about Livermore?

Livermore is named after the local rancher Robert Livermore who settled in the area in the 1830s. It is known as the easternmost city of the San Francisco Bay Area. A city of 82,000 residents, (2007), it is the largest city in the Tri Valley area (Dublin, Pleasanton, Livermore, San Ramon). In 2006, Money Magazine ranked Livermore as the 31<sup>st</sup> best place to live in the United States. Livermore is known for its local wineries as well as hosting the U.S. Department of Energy's Lawrence Livermore National Laboratory (LLNL). LLNL is the location of the world's most powerful laser, the NIF, and the world's most powerful supercomputer, Blue Gene/L. The town is also noted for one world record. A 105+ year old 4-watt light bulb called the Centennial Light housed by the Livermore-Pleasanton Fire Department is still burning bright. In truth, its "brightness" may be a matter of debate; it glows dimly, but definitely still functions as a light bulb. The Guinness Book of World Records, Ripley's Believe It or Not, and General Electric have concluded that the bulb has been burning continuously since 1901 with the exception of power failures and three times for moving to another station.

### What does "Tri - Valley" Mean

The Tri-Valley is used to refer to the 3 cities in the valley of Dublin, Pleasanton, and Livermore, and sometimes San Ramon. The area is also sometimes called "Livermore Valley" or "Amador Valley".

### Where are local Farmers' Markets?

- **Pleasanton**  
West Angela and Main Streets  
Saturdays 9 am to 1 pm, Year Round  
1<sup>st</sup> Wednesday, 6 pm to 9 pm June - October
- **Livermore**  
Carnegie Park, 3<sup>rd</sup> and J Streets  
Thursdays 4pm to 8 pm, May - October

### Where can I rent a car?

- **Avis** - 3956 Old Santa Rita Road, Pleasanton (925) 443-2847
- **Enterprise** - 4275 Rosewood Drive, Suite 26, Pleasanton (925) 847-7470
- **Hertz** - 3739 1st Street, Livermore (925) 371-0788

### Where is the nearest mall?

The **Stoneridge Shopping Center** at One Stoneridge Mall, near the intersection of I-580 and I-680 in Pleasanton has major stores such as Macys, JC Penny, Nordstrom, Sears as well as other shops like Gap, J. Crew, Ann Taylor, Brookstone, and Sanrio. Several restaurants include Todai (Japanese/Chinese buffet), Freshchoice, The Cheesecake Factory, and P. F. Chang's Chinese Bistro.

### What are outlets and where are they?

An outlet store or factory outlet is a retail store in which manufacturers sell their stock directly to the public through their own branded stores. They offer a wide range of discount, brand name, and designer stores. The stores can be brick and mortar or online. Traditionally, a factory outlet was a store, attached to a factory or warehouse. Often these stores are grouped together in outlet malls.

- **Gilroy**  
Gilroy Premium Outlets  
681 Leavesley Road, Gilroy  
145 stores
- **Livermore Valley**  
Prime Outlets — Coming 2008
- **San Leandro**  
Marina Square Center  
1201 Marina Boulevard, San Leandro  
<http://marinasquarecenter.com/>  
23 stores
- **Tracy**  
Prime Outlets  
1005 Pescadero Avenue #173, Tracy  
36 stores

#### **What is *dim sum*, and where can I go to eat it?**

*Dim Sum*, also called *yum cha* in Cantonese, is a type of Chinese cuisine involving a light meal served with tea. Dim sum, meaning “touch the heart” in Cantonese, consists of a wide spectrum of choices served in a small steamer basket or on a small plate, brought out to your table on carts.

- **Koi Garden Dim Sum & Seafood**  
4288 Dublin Boulevard, Unit #213, Dublin – Coming January, 2008
- **Tri Valley Seafood**  
5588 Springdale Ave, Suite B, Pleasanton (across from the Stoneridge Mall)  
(925) 734-0222
- **Willow Tree**  
6512 Regional Street, Dublin  
(925) 828-9111  
[www.willowtreerestaurant.com](http://www.willowtreerestaurant.com)

#### **How do I get photos for my application?**

- **Walgreen**  
1763 Santa Rita Road, Pleasanton  
(925) 426-1790  
Passport photos \$7.99
- **Costco** (membership required)  
2800 Independence Drive, Livermore

#### **How do I get a library card?**

Library cards are issued in person at the Reception Desk in the city Library. Cards are free to any person who is a resident of California or is employed or attends school in California. A short-term card may be issued to temporary visitors to the state. Just fill out an application form,

available at the Library, and present it and personal identification showing your current home address, such as a driver's license.

#### **Where is the nearest library?**

- **Dublin Library**  
200 Civic Plaza, Dublin  
(925) 828-1315  
[www.aclibrary.org](http://www.aclibrary.org)
- **Livermore Library**  
1188 S. Livermore Avenue, Livermore  
(925) 373-5500  
[www.livermore.lib.ca.us](http://www.livermore.lib.ca.us)
- **Pleasanton Library**  
5353 Sunol Boulevard, Pleasanton  
(925) 931-3400  
[www.ci.pleasanton.ca.us/library.html](http://www.ci.pleasanton.ca.us/library.html)

#### **Where are nearby post offices?**

- Dublin - 6937 Village Parkway, Dublin 94568-2405
- Livermore - 220 South Livermore Avenue, Livermore 94550-4636
- Pleasanton - 300 Black Avenue, Pleasanton 94566-9998

#### **Where can I eat near LPC?**

- **LPC Cafeteria**  
Building # 1700
- **Beeb's Sports Bar & Grill**  
915 Clubhouse Drive, Livermore  
Phone (925) 455-7070  
[www.beebsatlaspositas.com](http://www.beebsatlaspositas.com)
- **Costco** (with membership)  
2800 Independence Drive, Livermore
- **Wendy's**  
1051 Airway Boulevard, Livermore

#### **Where can I send a fax to my country?**

Come to the ISP Office for assistance.

#### **Where can I buy linens and furnishings for my room/ home?**

- **Mervyns**  
7117 Regional Street, Dublin. (925) 828-8800  
4500 Las Positas Road, Livermore. (925) 443-8800
- **Target**  
7200 Amador Plaza Road, Dublin. (925) 829-8900  
4300 Las Positas Road, Livermore. (925) 606-1445

- **Wal-Mart**  
4501 Rosewood Drive, Pleasanton. (925) 734-8744  
2700 Las Positas Road, Livermore. (925) 455-0215

### **Where can I buy groceries?**

Major supermarkets in the area include:

- **Lucky**  
2000 Portola Avenue, Livermore  
6155 West Las Positas Boulevard, Pleasanton
- **Safeway**  
4440 Tassajara Road, Dublin (24 Hours)  
1554 First Street, Livermore  
1701 Santa Rita Road, Pleasanton (24 Hours)
- **Trader Joes** – unique grocer with wide selection of natural foods  
1122A E. Stanley Blvd, Livermore  
4040 Pimlico Drive #150, Pleasanton
- **Ranch 99** – Asian Foods Supermarket  
7333 Regional Street, Dublin
- **Le Asia Supermarket** – Asian Foods Supermarket  
9100 Alcosta Boulevard, San Ramon

### **Where can I buy a car?**

Useful websites include:

[www.craigslist.org](http://www.craigslist.org)  
[www.autowest.com](http://www.autowest.com)

### **What Student Clubs are offered at LPC?**

- **The World Cultures Alliance (WCA) Club** is a club that celebrates the diversity of the campus and welcomes all students born abroad and those who are interested in multi-cultural issues and activities.

Also, see the webpage at <http://www.laspositascollege.edu/student-services/clubs.php> for a list of all the Student Clubs here at LPC.

## **V. Academic Matters**

### **Higher Education in the United States**

Unlike many countries, the United States has no single system of education. U.S. education is decentralized and highly diversified. The responsibility for education rests with the 50 individual states, not the federal government. The states, in turn, pass on most of the responsibility for local school arrangements to their cities and communities. This explains the variety of plans for public school education and the variety of curricula, particularly in the high schools.

In California, there are more than 2,600 public and private post secondary (after high-school) institutions, most of which are authorized to enroll International Students. There are 134 public and 190 private colleges that are approved by the State of California to award degrees.

#### **California Public Colleges and Universities**

In California, the public school system is one of the best in the United States. These schools are supported by state tax funds and tuition-free or low tuition to residents of California. Therefore, International students and other out of state residents must pay tuition. Priority for admissions is given to residents of California, but many colleges and universities here openly welcome International students to bring greater diversity to their campus, which benefits everyone. They are governed by the Western Association of Schools and Colleges (WASC), the chief accreditation agency for western states recognized by the U.S. Department of Education.

#### **University of California (UC)**

The UC System offers undergraduate and graduate degrees in a wide range of fields. These institutions concentrate on graduate education at the doctoral level, on professional education and on research. All campuses offer internationally known high quality education and have very high admissions requirements. UC Berkeley is rated among the top ten American graduate schools in every field of study.

There are 10 UC campuses in the state:

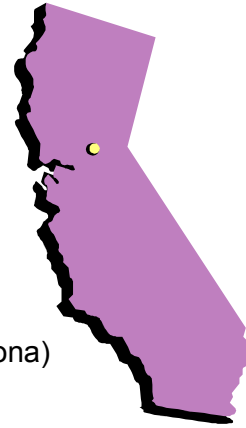
- UC Berkeley (also known as Cal, the first UC school)
- UC Davis
- UC Irvine
- UC Los Angeles (UCLA)
- UC Merced (newest UC campus, opened in 2005)
- UC Riverside
- UC San Diego
- UC San Francisco (graduate programs only, a Medical School)
- UC Santa Barbara
- UC Santa Cruz

#### **California State University (CSU)**

The CSU System offers undergraduate degrees and master's degrees in various fields. Most campuses offer very good quality education. These schools concentrate on undergraduate education. There are high admissions requirements, but generally not as high as the UC schools. They are known either as CSU, and then the city or region like CSU East Bay, or simply the name of the city with "State University" like San Francisco State University

There are 23 CSU campuses throughout the state:

California Maritime Academy (Vallejo)  
California Polytechnic State University, San Luis Obispo (also known as Cal Poly)  
CSU Bakersfield  
CSU Channel Islands  
CSU Chico  
CSU Dominguez Hills  
CSU Fresno (also known as Fresno State University)  
CSU Fullerton  
CSU East Bay (formerly CSU Hayward)  
Humboldt State University  
CSU Long Beach  
CSU Los Angeles  
CSU Monterey Bay  
CSU Northridge  
California State Polytechnic University (also known as Cal Poly Pomona)  
CSU Sacramento (also known as Sacramento State University)  
CSU San Bernardino  
San Diego State University  
San Francisco State University  
San Jose State University  
CSU San Marcos  
CSU Stanislaus  
Sonoma State University



### **Community Colleges**

The California Community Colleges are the largest system of higher education in the world. Designed to provide a quality education at an affordable price, and universal access to high education, California Community Colleges consist of 109 public institutions that offer technical training and basic academic programs leading to Associate degrees or Certificates for students, many of whom transfer on to a 4 year college or university.

Classes in American colleges and universities do not follow prescribed patterns. The individual professor is allowed a great deal of freedom in the conduct of his or her class. To a large extent, the way a class is conducted depends on the class size. International students may find that methods and practices at LPC are quite different from those in their home country.

## **Academic Structure**

### **Grades and Credits**

The undergraduate program at Las Positas College (and other U.S. American colleges and universities) is designed to give students a fairly broad education background, generally with an emphasis or specialization called a major. The major is the field of study in which the student is most interested and in which, generally, he or she takes the most course work.

In order to receive credit or grades for course work, a student must be properly registered for the term. Orientation will assist you with registration.

### **Units**

In order to graduate from LPC, a student must earn a specified number of units or credits and complete a specified number of courses for his or her major. Specific information on courses and departments at LPC, graduate requirements, and other academic matters can be obtained from the Counseling Center.

12 units constitute a minimum full-time program of study for undergraduate students. The maximum study load for undergraduates without special permission is 18 units. International students are encouraged to take only the minimum number of units (12) during their first semester of study.

### **Grades**

The quantity of a student's work is measured in units. The quality of a student's work is measured in grades (often called marks in other countries). There are 4 passing grades: A, B, C, and D (and shades in between at some schools) and one failing grade, F. Each grade carries a designated number of points per unit.

You should be aware that in the United States, different professors have different philosophies and methods of grading. Some use fixed scales, whereby each assignment or examination that is graded can receive a fixed maximum number of points (for example 10 or 100) and the number of points accumulated at the end of the semester is converted into a letter grade. (for example, 450 – 500 points is an A). By this system, everyone in the class could earn an A. An alternative to this method is that of grading on the curve, whereby a formula is used to assure that there will be a certain number of A's, a certain number of B's and so on. Under this system, the students in the class are competing with each other for high grades.

On the first session of a class, the professor will give students a printed sheet called a syllabus that among other things, explains his or her grading system. If you do not receive a syllabus, ask for one.

In the United States, grades are considered to be very important. Not only do they measure individual achievement, they are also used to rank and compare student's academic work. A student's grades receive considerable attention in competition for scholarships and fellowships, for admission to universities and graduate schools, and jobs.

### **Grade Points**

Below is a general definition of grades and grade points

A = Excellent = 4 .0 points per unit

B = Above average = 3.0 points per unit

C = Average = 2.0 points per unit

D = Barely Passing = 1.0 points per unit  
F = Failure = 0.0 points per unit

CR = Credit = 0 grade points. Units earned with no units attempted  
NC = No Credit = 0 grade points. No units earned and no units attempted. May negatively affect progress  
I = Incomplete  
W = Withdrawal

### **Grade Point Average (GPA)**

The GPA is an index of the quality of a student's entire work, used for eligibility for honors and recognition and other scholastic status. Each class has a specific unit value. This usually refers to the amount of class time per week.

For example  
History 7 is a 3 unit class

To Calculate your GPA

$GPA = \text{Total grade points} / \text{Total units attempted}$

For example

History 7 B (3 units). 3 units X 3 (B) grade points = 9 total grade points

Math 38 B (5 units) 5 units x 3 (B) grade points = 15 total grade points

PE IWT A (.5 units) .5 X 4 (A) grade points = 2 total grade points

$GPA = 26 / 8.5 = 3.05$

## Academic and other Important Terms

U.S. Americans speak a colorful, idiomatic English that may not resemble the English that you studied in your home country. Even a native English speaker might be confused by the combination of slang, technical words and academic terms that characterize campus conversations. Here are a few of the academic terms and slang expressions that you will hear around the LPC campus:

**Ace** - To earn a grade of "A." "I'll ace the course".

**Awesome** - Great, fantastic. "That concert was awesome."

**Blue Books** - Small notebooks used for taking exams. "I need to buy a blue book from the campus bookstore before tomorrow's chemistry exam."

**To "Bomb" or "Blow" an Exam** - To fail or do poorly on an exam. "I really bombed yesterday's history exam."

**Bummer** - An unpleasant experience. "That movie was a bummer. I can't believe it got good reviews".

**Burned Out** - Exhausted and lacking enthusiasm. Also used to describe heavy drug users. "After my exams, I felt totally burned out." "That guy is a total burn out."

**Bucks** - Dollars. "You can save a couple of bucks by buying things on sale."

**Cool** - Same as "awesome" mentioned above.

**Cram** - Frantic effort to learn neglected lessons right before a test. "I crammed all night before the exam."

**Crash** - To attend a class that you didn't register for, in hopes that the professor will sign you up. The most common way for students to join classes that are full. "I've got to get up early this morning to crash Psychology 1." Also, to be exhausted or fall into a deep sleep. "I just crashed last night after the party."

**East Bay** - The counties east of San Francisco and across the Bay Bridge of Contra Costa and Alameda which includes some of the following cities: Oakland, Livermore, Berkeley, Walnut Creek and Hayward. In addition, you may hear "North Bay", which refers to Marin County, "South Bay" which refers to Santa Clara County, and "The Peninsula" which refers to San Mateo County. "I'm heading out of the city to a party in the East Bay."

**Feedback** - Response or reaction. "That experiment was very controversial. It's going to get a lot of negative feedback."

**Finals** - Final examinations given at the end of the semester. "Are you ready for finals?"

**Flunk** - To fail a test or subject. "I flunked English."

**GPA** - Grade Point Average. "My GPA is 3.5."

**Geek** - An individual who spends too much time working and studying, and rarely has fun or relaxes. Also known as nerds and dorks. "That guy is such a geek, all he does is stay inside and study."

**Guts** - Courage. "It takes guts to register for 21 units."

**Hassle** - Something which seems unnecessarily bothersome or troublesome. "I have to transfer twice on the Wheels Bus to get to Joey's house. It's too much of a hassle."

**Hit Me Up** - Call me. "Hi Michelle, hit me up when you get out of school."

**Hit the Books** - To study. "I can't go tonight. I've got to hit the books."

**How's It Going?** - How are you? or What have you been doing? "Hi Liam, how's it going?"

**I.D.** - Identification card. "You'll need to show your student I.D. to check a book out of the library."

**Incomplete** - A notation on your academic record (transcript) in place of a grade if you are unable to complete the class requirements and need more time to finish. It eventually becomes a failing grade ("F") if you don't complete the work within one semester. "I had to ask the professor to give me an incomplete."

**Into** - Intense enthusiasm for something. "He's really into chess."

**Jerk** - An obnoxious person. "He's a real jerk."

**Kick It** - Get together, hang out. "Do you want to kick it tonight?"

**Major** - A subject of academic study chosen as a field of specialization.

**Mall** - A large, often in-door, shopping center. "I'm going to the Stoneridge Shopping Mall."

**Mid-Term** - An examination given at the middle of the semester. "Midterms are next week."

**Nerd** - See "geek"

**On the ball** - Alert, quick to respond. "You must be on the ball if you are in that class."

**Psyched** - Excited, looking forward to. "I'm psyched about going to the beach."

**Quiz** - A short test. "Our professor gives us a quiz every week."

**Red Tape** - Bureaucratic delay and paperwork. "There is so much red tape involved in withdrawing from a class."

**Rip Off** - To steal or cheat. "Someone ripped off his bike."

**Scantron** - An answer sheet for a multiple choice exam that is scored electronically.

**Term Paper** - A research report written for a class. "I must write a term paper for this class."

**“The City” or S.F.** - San Francisco. “I’m going to The City today.” Most residents of S.F. don’t like the name “Frisco” to refer to their city.

**What’s Up?** - How are you? “Hi Colin, what’s up?”

**Withdraw** - To voluntarily resign from the college or from a particular class. “I became ill and was in the hospital and lost so many days of class that I decided to withdraw from LPC.”

**W Number** - your Student I.D. number. It will begin the letter “W”

## Useful Acronyms – FYI (For Your Information)

**A&R** – Admissions and Records Office  
**AA** – Associate of Arts Degree  
**AS** – Associate of Science Degree  
**ASLPC** – Associated Students of Las Positas College  
**ATM** – Automated Teller Machine  
**CBT** – Computer Based Test (TOEFL)  
**CPT** – Curricular Practical Training  
**CSU** – California State University (System)  
**DHS** – Department of Homeland Security  
**DMV** – Department of Motor Vehicles  
**DSO** – Designated School Official  
**DSPS** – Disabled Students Programs and Services  
**EAD** – Employment Authorization Card  
**EOPS** – Extended Opportunity Programs and Services  
**ESL** – English as a Second Language  
**ETS** – Educational Testing Service (company that runs the TOEFL test)  
**FAQ** – Frequently Asked Questions  
**FERPA** – Family Educational Rights and Privacy Act  
**GE** – General Education  
**GPA** – Grade Point Average  
**GR** – Grade. Course must be taken for letter grade (no credit/ non credit)  
**iBT** – Internet Based Test (TOEFL)  
**ICC** – Inter Club Council  
**ICE** – Immigration and Customs Enforcement  
**IELTS** – International English Language Testing System  
**IGETC** – Intersegmental General Education Transfer Curriculum  
**ILC** – Integrated Learning Center  
**IRS** – Internal Revenue Service  
**ISP** – International Student Program  
**LPC** – Las Positas College  
**NGR** – No Grade of Record  
**OP** – Option. Course may be take for letter grade or credit/ no credit  
**OPT** – Optional Practical Training  
**PBT** – Paper Based Test (TOEFL)  
**PE** – Physical Education (Complex)  
**PIN** – Personal Identification Number  
**RSVP** – “Repondez Si’l Vous Plait” (French) – a request to respond to an invitation like a party  
**SAT** – Scholastic Aptitude Test  
**SEP** – Student Education Plan  
**SEVP** – Student and Exchange Visitor Program (part of ICE)  
**SEVIS** – Students and Exchange Visitors Information System  
**SSN** – Social Security Number  
**TB** – Tuberculosis  
**TBA** – To Be Announced  
**TOEFL** – Test of English as a Foreign Language  
**UC** – University of California (System)  
**USCIS** – United States Citizenship and Immigration Services  
**USPS** – United States Postal Service



## Academic FAQ

### **What does “Las Positas” mean?**

In 1986, the Board of Trustees selected the name Las Positas as the name for the District’s new college. Rancho Las Positas was the title of the original Spanish land grant at the College site, the name translates from Spanish to “little springs”.

### **What’s the difference between a “community college”, “junior college”, or “city college”?**

They are all the same, a 2 year institution that offers Associate Degrees, Vocational Certificates, and Transfer Preparation programs.

### **What’s the difference between a “college” and a “university?”**

U.S. Americans refer to these to mean the same thing for a 4 year school. However, a community college could never be called a university. University usually implies that the institution offers graduate programs.

### **If I drop a class, can I get a refund?**

To apply for an enrollment fee refund, you will need to file a request for a Refund form at the Office of Admissions and Records. No refunds will be given to students who withdraw from classes after the no-grade-of-record (NGR) deadline. We may be able to roll over your tuition payment for a class dropped before the NGR deadline into the next semester if you will be continuing into the next semester. Please come to the ISP Office for more information.

Otherwise, tuition refunds will be given as follows:

Prior to the first day of instruction – 90%

During the first week of instruction – 75%

After the first week of instruction – No refund.

### **Why do International students pay more than other students?**

U.S. citizens and Legal Permanent Residents who live in California pay taxes to the State of California. In turn, the State of California pays to fund public schools such as LPC. As International students, you do not pay taxes, and as a result, your tuition is based on what the current payment would be from the State of California to the school.

### **What do I do if the class I want is full?**

You should first try to register for the class on a daily basis in case another student drops out of the class. Please come in to the ISP Office for assistance. Then, if you are unsuccessful with this, go to the first class meeting to see if the instructor will add you. If so, take a green “Class Add Card” with you to request the instructor to write either his or her signature, or “Add Authorization Number”. Then take the completed card to ISP or Admissions and Records to officially enroll and pay for the class. If the instructor cannot add you, see a counselor, who may be able to suggest another class or other options.

### **I want to use CLASS-WEB. What’s my ID and PIN?**

Your ID number is your student ID number, also called your “W number”. It begins with “W” and then has 8 numbers. Your PIN is set to your birth date, in the format MM,DD,YY. This is the 2 numbers of your month, 2 numbers of your day, and last 2 numbers of the year you were born. For example March 28, 1988 would be 032888.

### **What are credit/ no credit classes?**

Some classes must be taken for a letter grade. This is indicated in the schedule of classes as GR. In other classes, labeled as OP, you may choose the credit/no credit option. If you

complete the course with “C” or better work, you will receive a grade of credit (“CR”) for the class. If you finish the course with a grade below a “C”, you will receive no credit (“NC”) for the class. The grades of CR or NC do not affect your GPA. This may be a good option to consider if it is available and you are not able to do well in a certain class that you need to take. If a class is listed as C/N it is only available to take as credit/no credit. See a counselor for more details.

**What is the difference between a unit and a credit?**

A unit is the same as a credit. This is the value of a college credit to a course. In general, one hour of lecture per week equals one unit of credit.

**When do I have to pay my semester’s tuition?**

You are expected to pay your semester’s tuition in full by the end of the 2<sup>nd</sup> week from the start of the semester.

**I am having difficulty in paying for my tuition. What can I do?**

Please come to talk with the International Student Program staff to discuss your payment options.

**Where can I buy a parking permit to park at LPC?**

You can purchase your parking permit online at [www.laspositascollege.edu](http://www.laspositascollege.edu) using Class Web.

**Where can I buy my textbooks?**

You can purchase your textbooks at the LPC Bookstore in Building 1300. Another alternative is online at [www.amazon.com](http://www.amazon.com) which may even have the book at a lower cost.

**How much is a parking citation?**

\$30, which is the same as a semester’s permit.

**What is the relationship between Las Positas College and Chabot College?**

Chabot College (pronounced “Sha-bow”) and LPC are sister colleges that are part of the Chabot-Las Positas College District.

**Can I take classes at Chabot?**

Yes. You must however take a minimum of 9 units at LPC to be considered a LPC student and keep your LPC I-20. Otherwise, you can transfer to Chabot College.

**What’s the difference between a CSU and a UC school?**

The UC schools offer Doctoral (PhD) programs in addition to undergraduate and graduate programs and as a result, they tend to be more well known and respected than the CSU schools which offer only Bachelor and Masters programs.

**Where can I get a Student ID card?**

Student ID cards are issued in the Admissions and Records Office, in Building # 700.

**Is class attendance important?**

Yes. Class attendance is very important in order to succeed in the class. Repeated absences will affect your grade and you could even be withdrawn from the class by the instructor.

**What happens if I have to miss class?**

It is best to notify the instructor in person or by e-mail in advance if you need to miss a class. Be sure to explain why you will be absent and ask for any assignments that you will miss.

**I want to e-mail my instructor. How can I find their e-mail address?**

All LPC instructors have campus e-mail accounts. You will need to know their first and last names, which should be on your course syllabus. If you need assistance to find an instructor's name, please come to the ISP Office. The instructor's e-mail address will be the first letter of their first name, and then their complete last (family) name, followed by: @laspostiascollege.edu. For example, to contact Tiina Hukari, her e-mail address would be [thukari@laspostiascollege.edu](mailto:thukari@laspostiascollege.edu).

**How can I have my classes taken at my university in my home country be used for a degree here at Las Positas College?**

You will need to have them professionally evaluated and translated (if necessary). Our Counselors are not able to evaluate International Transcripts. Please come to the ISP Office for a list of several International Creditnal Evalotrro service providers.

## VI. Having Fun

### Area Calendar of Events

#### January

Boat Show – Pleasanton

#### February

Chinese New Year Parade – Chinatown – San Francisco

#### March

St. Patrick's Day Festival – Dublin

St. Patrick's Day Parade – San Francisco

San Francisco International Film Festival – San Francisco

#### April

Cherry Blossom Festival – Japantown – San Francisco

San Francisco Giants (MLB) season begins – San Francisco

Oakland Athletics (MLB) season begins – Oakland

San Jose Earthquakes (MLS) season begins

#### May

Art & Wind Festival – San Ramon

Cinco de Mayo Festival – Pleasanton

Livermore Wine Country Festival – Livermore

Livermore Scottish Games and Gaelic Festival – Livermore

Bay to Breakers Foot Race – San Francisco

Carnival – Mission District – San Francisco

KFOG KaBoom – San Francisco

#### June

Alameda County Fair – Pleasanton

Lesbian and Gay Freedom Day Parade – San Francisco

Livermore Rodeo and Parade – Livermore

#### July

Fourth of July Celebration and Fireworks – San Francisco

Star Spangled Spectacular – San Ramon

Old Fashioned 4<sup>th</sup> of July – Livermore

Gilroy Garlic Festival – Gilroy

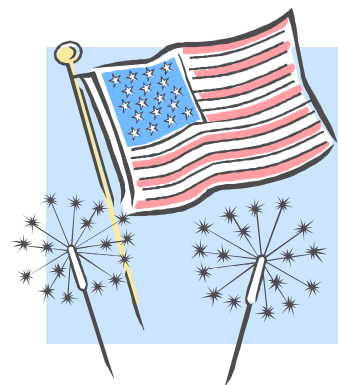
#### August

Aloha Festival – San Francisco

Chinatown Street Fest – Oakland

Nihonmachi Street Fair - Japantown – San Francisco

Diablo Japanese American Club Summer Festival – Concord



## September

Day on the Glenn Festival – Emerald Glenn Park - Dublin  
Solano Stroll – Albany  
San Francisco 49ers (NFL) season begins – San Francisco  
Oakland Raiders (NFL) season begins – Oakland  
Harvest Wine Festival – Livermore  
Scottish Highland Games – Pleasanton  
Children’s Fair – Livermore

## October

Exotic Erotic Halloween Ball – San Francisco  
Fleet Week – San Francisco  
California Independent Film Festival – Livermore  
San Jose Sharks (NHL) season begins – San Jose

## November

Golden State Warriors (NBA) season begins – Oakland

## December

Holiday Parade and Tree Lighting – Livermore  
Holiday Parade and Tree Lighting – Pleasanton  
Holiday Tree Lighting – Dublin  
Christmas in the Vineyards – Livermore  
The Nutcracker – War Memorial Opera House – San Francisco



## Area Attractions

### Activity Places

- **Boomers!**  
2400 Kitty Hawk Road, Livermore  
(925) 447-7275  
<http://www.boomersparks.com/park/livermore/index.html>  
Bumper Boats, Go Karts, Lazer Tag, Miniature Golf, Arcade Games
- **Super Franks Fun Adventure**  
5341 Owens Court, Pleasanton  
(925) 271-5880  
[www.superfranks.com](http://www.superfranks.com)  
Miniature Golf, Arcade

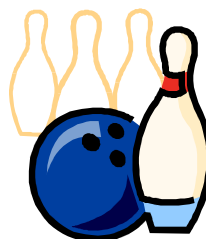


### Amusement Parks

- **Gilroy Gardens Family Theme Park**  
(formerly known as Bonfante Gardens)  
3050 Hecker Pass Road, Gilroy  
(408) 842-2121  
[www.bonfantegardens.com](http://www.bonfantegardens.com)  
A non-profit organization, this is California's only horticultural theme park designed for families with young children and garden lovers featuring 19 rides, 27 attractions, 6 majestic gardens and the world famous Circus Trees. Attractions are designed to education guests and foster a greater appreciation of the natural world and man's ability to shape it.
- **Paramount's Great America**  
4701 Great American Parkway, Santa Clara  
(408) 988-1776  
[www.pgathrills.com](http://www.pgathrills.com)  
This amazing amusement park offers something for the whole family. You'll find thrilling rides for children, family rides, 3-D animation shows at the Paramount Action FX Theater and loads of adrenaline-packed excitement. It also boasts the world's tallest double-decker carousel.
- **Six Flags Discovery Kingdom**  
2001 Marine World Parkway, Vallejo  
(707) 643-6722  
[www.sixflags.com](http://www.sixflags.com)  
Experience wildlife and wild rides at the combination theme park, wildlife park, and oceanarium that contains more rides, shows and attractions than any other theme park in Northern California.

### Bowling

- **Earl Anthony's Dublin Bowl**  
6750 Regional Street, Dublin  
(925) 828-7550  
[www.earanthonysdublinbowl.com](http://www.earanthonysdublinbowl.com)



- **Granada Bowl**  
1620 Railroad Avenue, Livermore  
(925) 447-5600  
[www.grnadabowl.com](http://www.grnadabowl.com)

### Comedy Club

- **Tommy T's Comedy Club and Steakhouse**  
5104 Hopyard Road, Pleasanton  
(925) 227-1800  
[www.tommyts.com](http://www.tommyts.com)

### Golf

- **Dublin Ranch Golf Course**  
5900 Signal Hill Drive, Dublin  
(925) 445-7040  
[www.dublinranchgolf.com](http://www.dublinranchgolf.com)
- **Las Positas Golf Course**  
917 Clubhouse Drive, Livermore  
(925) 443-3122  
[www.laspositasgolfcourse.com](http://www.laspositasgolfcourse.com)
- **The Course at Wente Vineyards**  
5050 Arroyo Road, Livermore  
(925) 456-2475  
[www.wentegolf.com](http://www.wentegolf.com)  
Designed by the famous golfer Greg Norman



### Golf Driving Range

- **Tri Valley Golf Center**  
1780 Freisman Road, Pleasanton  
(925) 455-4653  
[www.trivalleygolfcenter.com](http://www.trivalleygolfcenter.com)

### Minigolf

- **Boomers!**  
2400 Kitty Hawk Road, Livermore  
(925) 447-7275  
<http://www.boomersparks.com/park/livermore/index.html>
- **Super Franks Fun Adventure**  
5341 Owens Court, Pleasanton  
(925) 271-5880  
[www.superfranks.com](http://www.superfranks.com)

### Movie Theaters

- **Livermore Cinemas**  
2490 First Street, Livermore  
(925) 443-7469

- **Regal Cinemas Hacienda Crossing 20 & IMAX**  
5000 Dublin Boulevard, Dublin  
(925) 560-9600

### Museums

- **Blackhawk Museum**  
3700 Blackhawk Plaza Circle, Danville  
(925) 736-2280  
[www.blackhawkmuseum.org](http://www.blackhawkmuseum.org)
- **Dublin Heritage Center**  
6600 Donlon Way, Dublin  
(925) 452-2100

### Nightlife

- **Aura Nightclub**  
4824 Hopyard Road, #F10, Pleasanton  
(925) 416-0777  
[www.nightclubaura.com](http://www.nightclubaura.com)

### Ice Skating

- **Dublin Iceland**  
2712 San Ramon Road, Dublin  
[www.dubliniceland.com](http://www.dubliniceland.com)



### Science Museums

- **Chabot Space and Science Center**  
10000 Skyline Boulevard, Oakland  
[www.chabotspace.org](http://www.chabotspace.org)
- **Lawrence Livermore National Laboratory Discovery Center**  
7000 East Avenue, Livermore  
(925) 423-9051  
[www.llnl.gov](http://www.llnl.gov)

### Swimming

- **Del Valle Regional Park**  
7000 Del Valle Road, Livermore
- **Dolores Bengston Aquatic Center**  
4455 Black Avenue, Pleasanton  
(925) 931-3420
- **Dublin Swim Center**  
8157 Village Parkway, Dublin  
(925) 556-4590
- **Robert Livermore Pool**  
4444 East Avenue, Livermore



- **San Ramon Valley Olympic Pool and Aquatic Park**  
9900 Broadmoor Drive, San Ramon  
(925) 973-3240

**Shadow Cliffs Regional Recreation Area (Waterslides)**

- 2500 Stanley Boulevard, Pleasanton  
(925) 846-4900

**Water Parks**

- **WaterWorld USA**  
1950 Waterworld Parkway, Concord  
(925) 609-1364

[www.sixflags.com](http://www.sixflags.com)

This East Bay water park is fun for people of all ages and is filled with dozens of water activities to enjoy. Some of its most popular rides include high speed water slides, double tube slides, shotgun slides, a wave pool, and a 20,000 square foot activity pool. Park amenities include free innertubes, lounge chairs, and lifejackets, a raft ride slide where six people go at a time, a public picnic area outside the park, lots of parking, lockers to rent, a first aid station, arcade, souvenir boutique, ATM, and changing rooms with shower facilities.

**Wineries**

The Livermore Valley Wine Country is home to 35 wineries.

- **The Steven Kent Winery & La Rochelle Winery**  
5443 Tesla Road, Livermore  
(925) 456-2357  
[www.stevenkent.com](http://www.stevenkent.com)  
Tasting Room, Group Tasting Tours

- **Wente Vinyard Restaurant & Events Center**  
5050 Arroyo Road, Livermore  
(925) 456-2450  
[www.wentevineyards.com](http://www.wentevineyards.com)  
Tasting Room



**Zoo**

- **Oakland Zoo**  
9777 Golf Links Road, Oakland (Off I-580)  
[www.oaklandzoo.org](http://www.oaklandzoo.org)

## Sports

You can watch and participate in almost every sport imaginable. The San Francisco Bay Area has several professional sports teams that attract hundreds of thousands of people a year. All teams sell tickets to their own games, some offer student rates. The professional teams whose games you might like to see are:

### **(American) Football**

#### **Oakland Raiders**

McAfee Coliseum, Oakland

[www.raiders.com](http://www.raiders.com)

The Oakland Raiders play in the American Football Conference (AFC) of the National Football League (NFL).

#### **San Francisco 49ers**

Monster Park, San Francisco

[www.49ers.com](http://www.49ers.com)

The San Francisco 49ers play in the National Football Conference (NFC) of the NFL.

### **Baseball**

#### **Oakland Athletics (A's)**

McAfee Coliseum, Oakland

[www.oaklandathletics.com](http://www.oaklandathletics.com)

The Oakland Athletics take the field at the McAfee Coliseum, located next to the Oracle Arena in Oakland. This multi-use facility is located north of downtown Oakland along Interstate 880. It is also accessible by BART, which puts on extra service for home games. They play in the American League (AL) West Division of Major League Baseball (MLB).

#### **San Francisco Giants**

AT&T Park, San Francisco

[www.sfgiants.com](http://www.sfgiants.com)

The San Francisco Giants play in the National League (NL) West Division of MLB.

### **Basketball**

#### **Golden State Warriors**

Oracle Arena, Oakland

[www.warriors.com](http://www.warriors.com)

The Golden State Warriors represent the Bay Area in the National Basketball Association (NBA) professional basketball league, playing in the Pacific Division of the Western Conference. Basketball season usually goes from November through June. Tickets for professional games can be purchased at most BASS and Ticketmaster outlets. For more information, refer to the sports section of the newspaper. They play their games at the Oracle Arena in Oakland. It is assessable by BART or by car on Interstate 880 North, exit at 66<sup>th</sup> Avenue.

### **Hockey**

#### **San Jose Sharks**

HP Pavillion, San Jose

[www.sjsharks.com](http://www.sjsharks.com)

The San Jose Sharks play in the Pacific Division of the Western Conference of the National Hockey League (NHL).

**Soccer (Football)****San Jose Earthquakes**

The San Jose Earthquakes return to play in the Western Conference of the Major Soccer League (MLS) in 2008.

<http://web.mlsnet.com/t110/>

**Collegiate Sports****Las Positas College Hawks**

Visit the Athletics Department website at: <http://www.laspositascollege.edu/athletics/index.php>

## Places to Visit

### San Francisco

San Francisco is a unique and breathtaking city, built on a series of hills that offer memorable views of the San Francisco Bay and the Pacific Ocean. Besides featuring renowned museums and art galleries, almost every neighborhood is a treasure of its own including a variety of restaurants and shops that reflect the City's great ethnic and cultural diversity. These links provide general information about visiting San Francisco, an experience that should be repeated over and over.

**Alamo Square** – Possibly the most photographed spot in the City. These colorful Victorian houses also called “Painted Ladies” with the San Francisco skyline in the backdrop have graced many postcards and movies scenes.

**Alcatraz** – Spanish for “pelican” after the birds that were the island’s only inhabitants until the 1850s when it served as a military fortification and incarceration facility for war prisoners during the Spanish-American War. In 1934, Alcatraz became the infamous maximum-security prison for members of organized crime and high-risk convicts. Although the island is only a mile from shore, there is no evidence of any successful escapes across the icy bay.

**Cable Cars** – The cable car was introduced to San Francisco on August 2, 1873. Wire-cable manufacturer Andrew Hallidie conceived the idea after witnessing an accident in which a horse-drawn carriage faltered and rolled backward downhill dragging the horses behind it. These cable cars created a vital link in San Francisco’s public transportation system and opened the door for building on steep hills which until this time was thought to be impossible. The 1906 earthquake and fires destroyed most of the lines, but a few of the existing lines were restored. These beloved cable cars are the only vehicles of their kind still in operation and are designated National Landmarks. A favorite route is to take the Hyde Street Cable Car from Powell Street Station to Aquatic Park near Fisherman’s Wharf.

**Chinatown** – The largest Chinatown outside of Asia, Chinatown is home to 10,000 of the City’s Chinese residents. You will find many fine restaurants serving dim sum, temples, fortune cookie factories, garment factories, and grocery stores.

**Fisherman’s Wharf** – Famous for its Italian seafood restaurants serving Dungeness crab and a signature San Francisco dish, clam chowder in a sourdough bread bowl. Be sure to visit PIER 39, home port to the Blue & Gold Fleet and offers two levels of specialist shops and restaurants, the Aquarium of the Bay, and the famous sea lions (seasonal).

**Golden Gate Bridge** - Acclaimed as one of the world's most beautiful bridges, there are many different elements to the Golden Gate Bridge which make it unique. With its tremendous towers, sweeping cables and great span, the Bridge is a sensory beauty featuring color, sound and light.

**Golden Gate Park** – Among the world’s greatest urban parks, the treasure is approximately 3 miles long and a half mile wide. You will find the Conservatory of Flowers, the Japanese Tea Garden, and the deYoung Museum here.

**Lombard Street** – Located in the Russian Hill district, Lombard Street is known as “the crookedest street in the world” because of its eight sharp turns on a 40-degree slope. The street zigzags around beautiful flowers and shrubs and offers a nice view of the Bay.

**Oakland**

**Jack London Square**  
**Chinatown**

**Berkeley**

**U.C. campus.** Birthplace of Free Speech Movement

**Monterey**

**Monterey Bay Aquarium**

One of the country’s finest aquariums, this non-profit aquarium is home to more than 6,500 specimens of Marine life indigenous to the Monterey Bay.

886 Cannery Row, Monterey

(831) 648-4800

<http://www.mbayaq.org/>

**Cannery Row**

**17 Mile Drive**, Lone Cypress

**Sea Lions**

**Santa Cruz**

**U.C. campus**

**Beach Boardwalk** - Famous 100 year old beach boardwalk with an amusement park with a famous wooden roller-coaster. Free Friday night concerts on the beach during the Summer.

**Yosemite National Park**

Sprayed by thousand-foot waterfalls and framed by monumental granite spires - including Half Dome - it is the most famous glacially carved landscape in the world.

**San Simeon**

**Hearst Castle**

**Big Sur**

**Lake Tahoe**

Lake Tahoe is the largest, most beautiful and pristine alpine lake in North America. The California/Nevada state line runs vertically through the middle of the Lake. The City of South Lake Tahoe is in California, while the Tahoe Township of Douglas County, Nevada is just across the state line. Together, they comprise the community of Lake Tahoe, South Shore, with a combined population of about 40,000.

**Sacramento**

**State Capitol**

**Old Sacramento**

**Railroad Museum**

### Travel Timetable from Livermore (one way)

Allow extra time depending on traffic

Berkeley	42 minutes	63 km	39 miles
Grand Canyon National Park	11 hours 19 minutes	1207 km	750 miles
Lake Tahoe (South Lake)	3 hours 15 minutes	304 km	189 miles
Las Vegas	7 hours 59 minutes	851 km	529 miles
Los Angeles	5 hours 5 minutes	547 km	340 miles
Monterey	1 hour 48 minutes	172 km	107 miles
Napa	1 hour 9 minutes	98 km	61 miles
Oakland	34 minutes	51 km	32 miles
Sacramento	1 hour 23 minutes	140 km	87 miles
San Diego	7 hours 2 minutes	742 km	461 miles
San Francisco	46 minutes	71 km	44 miles
San Jose	41 minutes	56 km	35 miles
San Simeon (Hearst Castle)	3 hours 32 minutes	323 km	201 miles
Santa Cruz	1 hour 13 minutes	109 km	68 miles
Yosemite National Park	3 hours 8 minutes	240 km	149 miles



## VII. Cultural Issues

### U.S. Holidays

#### **New Year's Day** – January 1

New Year's Eve, December 31, is more important to U.S. Americans than New Year's Day itself. Everyone gathers with friends and family to ring out the old and ring in the new. New Year's Day is an official holiday on which schools, offices, banks, and stores are closed. No classes

#### **Martin Luther King Jr.'s Birthday** – Third Monday in January

Dr. Reverend Martin Luther King Jr. organized and led the non-violent Civil Rights movement in the U.S. during the 1960's for desegregation in the South, for which he received the Nobel Peace Prize. His birthday became an official holiday in 1986. No classes.

#### **Groundhog Day** – February 2

The groundhog is a small burrowing animal that hibernates during the winter months. Legend has it that in Punxsutawney, Pennsylvania, if the groundhog named Punxsutawney Phil emerges on February 2 and sees his shadow (a sunny day), he will be frightened and return to his burrow and this is supposed to indicate 6 more weeks of wintry cold weather. If he doesn't see his shadow, then spring will come soon. Not an official holiday. See the very funny movie Groundhog Day starring Bill Murray for more information about this day.

#### **Valentine's Day** – February 14

A special day to treat the special someone in your life with roses or chocolates. Many children exchange cards to classmates, and couples go out for a romantic date. Many people wear red on this day. This day originated from a Roman named Valentine. It was forbidden for men in the Roman Army to marry, but the Christian Valentine presided over many weddings anyway. He was sent to jail because of this and was martyred for refusing to give up Christianity. He died on February 14, 269 A.D., the same day that had been devoted to love lotteries. Legend also says that before his death, St. Valentine had left a farewell for the jailer's daughter, who had become his friend and signed it "from your valentine". Not an official holiday.

#### **President's Day** – Third Monday in February

Commemorates the birthdays of two of the most famous presidents; George Washington and Abraham Lincoln. George Washington was the Commander in Chief of the Revolutionary Army that freed the United States from the colonial rule of England and first president of the United States. Abraham Lincoln served as president during the U.S. Civil War (1861-1865), a period that has a profound effect on the history of the nation. He acted to free the slaves and bring the seceded Southern states back into the Union. No classes.

#### **St. Patrick's Day** – March 17

St. Patrick is the patron saint of Ireland, and this holiday was brought to the U.S. by Irish immigrants. People celebrate this day by wearing green and getting together with friends to party and sing Irish folk songs. The city of Dublin has a parade and week-end festival to celebrate the day. Not an official holiday.

#### **Good Friday** – A Friday in March or April, depending on the lunar calendar

Christians remember the day that Jesus was crucified and died on the cross on this day. Not an official holiday.

**Easter** – A Sunday in March or April, depending on the lunar calendar

A religious holiday for Christians who believe that it was on this day that Jesus rose from the dead. Many folk traditions are now connected with Easter, including the decoration of brightly colored eggs and the giving of Easter baskets full of candy to children. Not an official holiday.

**April Fool's Day** – April 1

As in many other countries, this day is marked by the custom of playing practical jokes on one's friends and colleagues. Not an official holiday.

**Cinco de Mayo** – May 5

The holiday of Cinco De Mayo, *The 5th Of May* in Spanish, commemorates the victory of the Mexican militia over the French army at The Battle of Puebla in 1862. In the United States, this event has become the medium to celebrating the culture of Mexico and contributions of Chicanos (Mexican-Americans) in the U.S. People often go to parties or Mexican restaurants and have Mexican food and drink, often accompanied by Mexican music. Interestingly, although celebrated in the city and state of Puebla, it is not widely celebrated in Mexico. Also, it is not as many people think, Mexico's Independence Day, which is actually September 16. Not an official holiday

**Mother's Day** – Second Sunday in May

U.S. Americans honor their mothers on this day by sending them flowers, buying small gifts, and taking them out to eat so that they don't have to do any work around the house. Not an official holiday.

**Memorial Day** – Last Monday in May

This is the day on which U.S. Americans remember those who died in the service of their country. Many families visit graves and decorate them with flowers, and the day is also marked with patriotic parades. This day is also considered the unofficial beginning of the summer season. No classes.

**Father's Day** – Third Sunday in June

Father's are honored on this day. Children give them cards and gifts. Not an official holiday.

**Independence Day** – July 4

A national holiday that commemorates the day the Declaration of Independence was signed in Philadelphia in 1776. This holiday is celebrated all over the country with picnics, political speeches, and parades that culminates in fireworks displays.

**Labor Day** – First Monday in September

This official holiday was established in recognition of the labor movement's contribution to the productivity of the country. It is the unofficial end of the summer season and is celebrated with picnics and other outings.

**Columbus Day** – Second Monday in October

This day honors Christopher Columbus who is credited with discovering the Americas in 1492. Italian Americans celebrate this day as a cultural pride day. This day is also known as Indigenous People's Day in some cities, like Berkeley, to recognize that there were already Native Americans living in the Americas at the time of Columbus' "discovery" and that this encounter was eventually devastating to them and their civilizations.

**Halloween** – October 31

This was originally a religious holiday, the holy night before All Saint's Day, November 1. It is now celebrated mostly as a children's day. Traditions include carving out pumpkins with funny faces as well as dressing up in costumes and going around the neighborhood to trick-or-treat, receive treats of candy, fruit, and cookies. Many adults also dress up and go to parties or watch scary movies. Not an official holiday.

**Veterans Day** – November 11

Remembrance of all who have served in the Armed Forces, as well as the ending of World War I in 1918. Also called Armistice Day or Remembrance Day.

**Thanksgiving** – Fourth Thursday in November

The first Thanksgiving was observed by the Pilgrims at Plymouth Colony in Massachusetts in 1621 to give thanks for the bountiful harvest and their triumph of survival over the wilderness. The Pilgrims were saved by the generosity of the Native Americans in the area. Now, it is a time when Americans give thanks for the good life they enjoy and celebrate by getting together with family to eat traditional foods such as turkey, cranberry sauce, sweet potatoes, and pumpkin pie. This is an official holiday and there are no classes on Wednesday, Thursday, and Friday during this week.

**Christmas** – December 25

An official holiday that celebrates the birth of Jesus. Many U.S. Americans of Christian faith regard this as the most important holiday of the year. Family members travel great distances to be together for this day on which gifts are exchanged and a traditional dinner is shared. It is especially exciting for children, as they are taught that Santa Claus visits their homes and gives them presents under the Christmas tree while they are sleeping. Even families who do not have strong religious convictions decorate a Christmas tree and join in the festivities of the season.

## U.S. American Cultural Characteristics

Although many U.S. Americans do not think of their country as having shared characteristics and values, there is a distinct culture in the U.S. just as there is in other countries. The following are generalizations of how U.S. Americans think and act, and hopefully, by understanding some of the core values of U.S. American culture, you can meet and understand individual U.S. Americans a bit easier.



**Achievement** – U.S. Americans put high value on competition and respect achievement. Expressions of praise such as “she’s a hard worker” conveys admiration for a person who approaches a task conscientiously and persistently, seeing it through to a successful conclusion. U.S. Americans admire achievers, people whose lives are centered around efforts to accomplish some physical, measurable thing. Books and movies are judged not so much on quality, but on how many copies are sold, or how many dollars in profit are made. In universities too, there is an emphasis on achievement, on grades and one’s GPA (grade point average).

**Action** – The U.S. is a highly active society, full of movement and change. U.S. Americans believe it is important to devote significant energy to their job or to other daily responsibilities. Beyond this, they tend to believe that they should be doing something most of the time. They are not usually content, as people from many other countries are, to sit for hours and talk with other people. They get restless and impatient. They believe they should be doing something, or at least making plans and arrangements for doing something later.

**Competition** – U.S. Americans place high value on achievement and success, and this leads them to compete with each other. You will find friendly and not so friendly competition everywhere. The U.S. American style of friendly joking “getting the last word in” and the quick reply are subtle forms of competition.

**Cooperation** – Although always in competition, U.S. Americans also have a good sense of “teamwork” of cooperation with others to achieve a common goal.

**Directness** – Discussing issues, events and ideas openly with other individuals is considered quite proper in the United States. U.S. Americans might bring up in conversations issues which you would consider sensitive or embarrassing or rude. Try not to be offended. U.S. Americans are also quick to get to the point and not to “beat around the bush” particularly in business situations. They do not spend much time on polite social talk, as do many other nationalities.

**Equality** – U.S. Americans believe in the ideal as stated in their American Declaration of Independence that “all men are created equal”. Although they sometimes violate the ideal in their daily lives, particularly in matters of interracial relationships, U.S. Americans have a deep faith that in some fundamental way, all people (or at least all U.S. American people) are of equal value, no one is born superior to anyone else. They really don’t believe this is true in terms of ability, but it is true in terms of opportunity and in terms of social, legal and political rights. There are many “equal rights movements” going on at this time in the United States such as equality rights for women, ethnic minorities, homosexuals, and for the disabled.

**Goodness of Humanity** – The future cannot be better if people are not fundamentally good and improvable. U.S. Americans assume that human nature is basically good, not basically evil.

International visitors will see them doing many things that are based on the assumption that people are good and can make themselves better.

**Individuality** – Most U.S. Americans want to be treated as individuals, rather than as representatives of a certain class, position, or group. Where in many countries people often seem to think of themselves primarily as members of a group or community, U.S. Americans see themselves as individuals and this individuality makes them suspicious of authority in any form. Their basic concept of government is that it exists to serve them, not the other way around.

**Independence** – U.S. Americans tend to see dependence in any form as dangerous and a sign of weakness. They dislike being dependent on other people. They are taught to be self-reliant and “fend for yourselves” at an early age. In contrast to many other countries, many U.S. American parents have their newborn infants sleep in his or her own bedroom to encourage this independence.

**Informality** – In most cases, U.S. Americans avoid elaborate social rituals. U.S. Americans are not without polite forms, but they tend to be casual and informal most of the time. This is particularly true in California. This is due more to a lack of concern for social ceremony, and a value on equality, than a lack of respect.

**Progress** – U.S. Americans are generally less concerned about history and traditions than are people from other societies. “The past doesn’t matter” many of them will say. “It’s the future that counts”. They look ahead. This fundamental U.S. American belief in progress and a better future contrasts sharply with the fatalistic attitude that characterizes people from many other countries where there is a pronounced reverence for the past. In those cultures, the future is considered to be in the hands of “fate”, “God”, or at least the few people or families that dominate the society.

**Punctuality** – Time is a “resource” for U.S. Americans, that like water or coal, can be used or “spent” well or poorly. “Time is money” they say. The future will not be better than the past or the present, as Americans are trained to see things, unless people use their time for constructive, future-orientated activities. The ideal person is punctual and is considerate of other people’s time. Therefore you are expected to be “on time” in the United States. If you have an appointment at 10:30 am with the dentist, plan to be there at 10:30 and no later. If you are invited to dinner at 7:00 pm, be there at 7:00 or within 20 minutes or so thereafter (not earlier though, as your hosts may still be preparing). If you cannot keep an appointment or if you cannot avoid being late, it is extremely important that you telephone immediately and explain. If you are late and have not called, you may find the person you are meeting to be abrupt and even unpleasant. Most social functions, lectures, church services, etc. begin on time.

## **Cultural Adjustment**

### **Culture Shock**

Do you ever feel homesick, depressed and critical of your new home country? These are common and usual feelings among those adjusting to a new culture. These tips may help you overcome such feelings now and when you return to your country.

People traveling in other countries sometimes experience emotional discomfort due to their being in a culture different from their own. They may feel irritable, critical, bitter, homesick or depressed. These may be symptoms of what is commonly called "culture shock". It is very normal to have these feelings. For some people, culture shock is brief and hardly noticeable. However, for most of us, culture shock is something we have to deal with over a period of at least several months and possibly a year or more.

Culture Shock comes from:

- Being in different situations from what you have been used to for a long period
- Being cut off from what had been your everyday life
- Bringing your own values from your country into a country with new and different values

In order to minimize culture shock, you should:

- Expand your knowledge and understanding of U.S. American culture and values
- Develop U.S. American friendships in order to feel related to U.S. American people and to understand their culture better
- Be curious and try new things
- Try to understand before you judge
- Think positively as much as possible
- Have a sense of humor

### **Reverse Culture Shock**

Many travelers do not expect they will get reverse culture shock, or re-entry shock, when they return to their countries. Often they are not aware that have it. Reverse culture shock symptoms are similar to culture shock: discomfort, irritability, resentment and depression. They may even have "homesickness" for the United States.

If you have you some knowledge of reverse culture shock, your problems will be easier to solve.

Reverse Culture Shock occurs because:

- With all your new experiences living abroad, you will have changed somewhat while being in the United States (although you may not be aware of it).
- Your home country, family, and friends will possibly also have changed.
- Your family and friends will expect you to have the same behavior you had before and they do not expect new behavior.
- Your family and friends may not be interested or can not relate to your stories about the U.S. as much as you expect. Just like you, they want to talk about what happened to them.

Here are some suggestions for re-adjustment:

- Say good-bye to everyone and everything you may miss before leaving the U.S.
- Share the feelings you had in the U.S.A. with your friends and family members, but do not always expect that they can relate to your experiences.
- Catch up with trends: new vocabulary, fashion, food, music, current events.

- Research various groups that interest you: schools, clubs, international and intercultural groups, travel agencies, and exchange organizations. You may want to apply your new intercultural skills and experiences that you developed in the U.S.
- Find someone who can share the experiences or skills with you, such as people with international experience and foreigners in your country.



## VIII. Metric Conversions

### Temperature Conversations

Most temperatures in the United States are given in Fahrenheit degrees, unless otherwise noted.

Conversion F to C

Subtract 32

Multiply by 5

Divide by 9

For example: To convert 80 F

$$80 - 32 = 48$$

$$48 \times 5 = 240$$

$$240 / 9 = 26.67 \text{ C}$$

Conversion C to F

Multiply by 9

Divide by 5

Add 32

For example: To convert 27 C

$$27 \times 9 = 243$$

$$243 / 5 = 48.6$$

$$48.6 + 32 = 80.6 \text{ F}$$

### Oven Heat

250 F (120 C) = very slow

300 F (150 C) = slow

325 F (165 C) = moderately slow

350 F (180 C) = moderate

375 F (190 C) = moderately hot

400 F (205 C) = hot

450 – 500 F (230 – 260 C) = very hot

### Length

1 millimeter (mm) = .0397 inches

1 centimeter (cm) = 10 mm = .3937 inches

1 meter (m) = 100 cm = 1.0936 yards

1 kilometer (km) = 1000 m = .6214 miles

1 inch (in) = 25.4 mm

1 foot (ft) = 12 in = .3048 m

1 yard (yd) = 3 ft = .9144 m

1 mile = 1,760 yd = 1.6093 km

A helpful website for conversions is: <http://www.worldwidemetric.com/metcal.htm>

## Key to Buildings

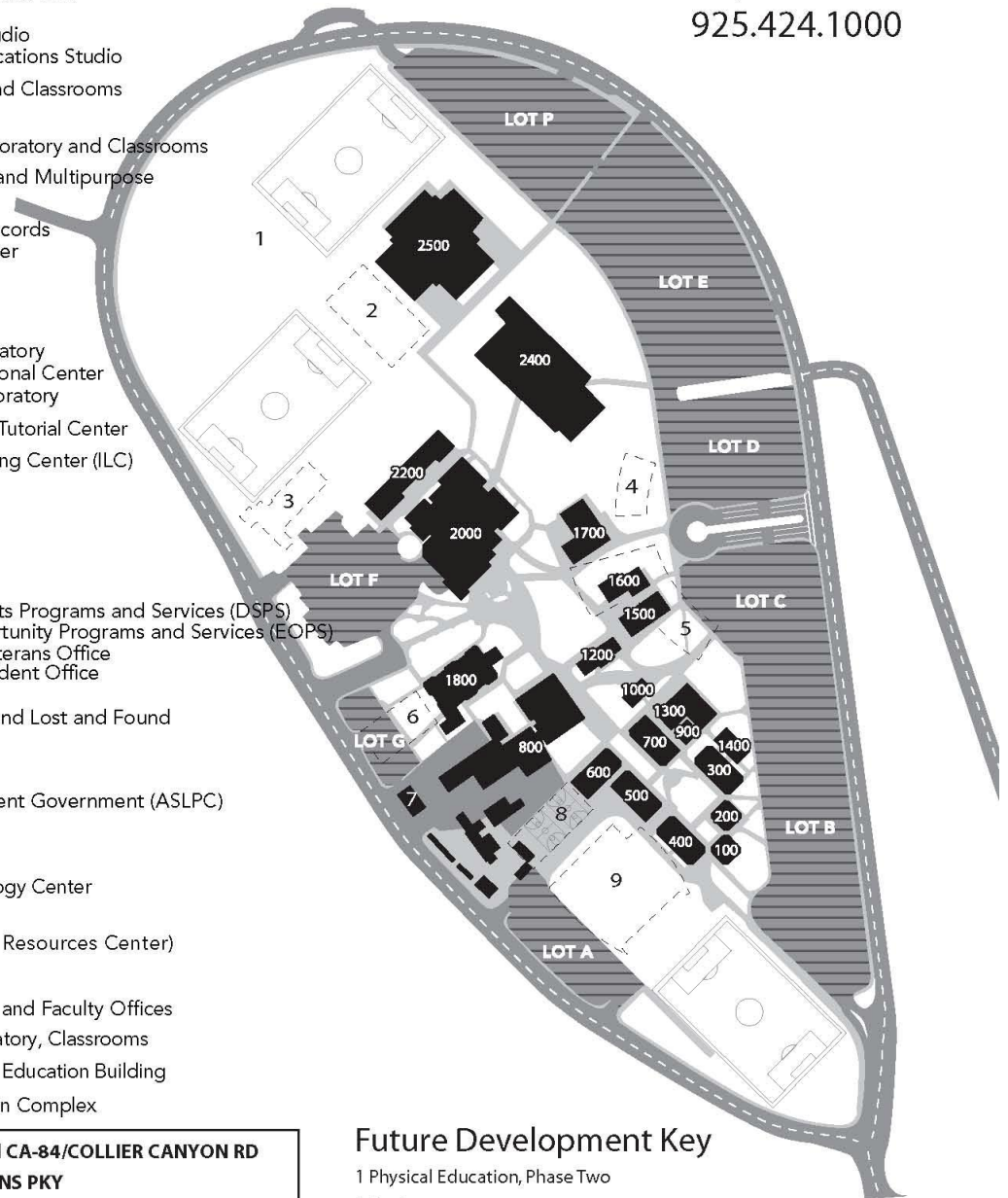
100	Administration
200	Classrooms
300	Communications and Arts LPC Express Photography Studio Visual Communications Studio
400	English Center and Classrooms
500	Fine Arts Mathematics Laboratory and Classrooms
600	Performing Arts and Multipurpose
700	Student Services Admissions & Records Counseling Center Classrooms
800	Multi-Purpose Little Theater Computer Laboratory Technical-Vocational Center Automotive Laboratory
1000	Assessment and Tutorial Center
1200	Integrated Learning Center (ILC)
1300	Bookstore
1320	Faculty Offices
1400	Classrooms
1500	Student Services Disabled Students Programs and Services (DSPS) Extended Opportunity Programs and Services (EOPS) Financial Aid/Veterans Office International Student Office
1600	Campus Safety and Lost and Found Staff Lounge
1700	Student Center Associated Student Government (ASLPC) Cafeteria Health Center
1800	Science/Technology Center Faculty Offices
2000	Library (Learning Resources Center) Faculty Offices
2100	Academic Deans and Faculty Offices
2200	Computer Laboratory, Classrooms
2400	Multi-Disciplinary Education Building
2500	Physical Education Complex

## Las Positas College

3033 Collier Canyon Road

Livermore, CA 94551

925.424.1000



**EXIT: AIRWAY BLVD toward CA-84/COLLIER CANYON RD**  
**Turn RIGHT onto N CANYONS PKY**  
**Turn LEFT onto COLLIER CANYON RD**  
**Las Positas College entrance is on your RIGHT**



## Future Development Key

- 1 Physical Education, Phase Two
- 2 Pool
- 3 Child Development Center
- 4 Central Administrative Services
- 5 Student Services
- 6 Science Technology Classrooms & Lab
- 7 Information Technology Center
- 8 Classrooms and Lecture
- 9 College Center for the Arts