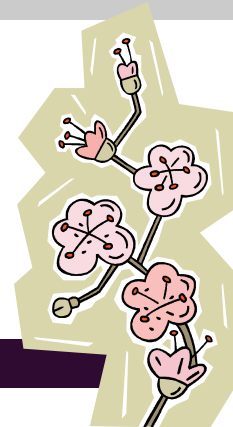




ISP News



Inside This Issue:

Welcome	1
Spring Break	1
Spring Fling - Boomers	1
Withdraw Deadline	2
Tax Deadline	2
April Fool's Day	2
Cherry Blossom Festival	3
Musical - Working	3
Graduation Deadline	4
Major League Baseball	4
Major League Soccer	5
April Birthdays	5
Earth Day	6
Concerned about your Grades	6
ISP Open House	6
Sales Tax Increase	7
Native American Expo	7
Livermore Powwow	7
Easter	7

Volume 3, Issue 3

April 2009

Dear Students,

We hope that you are enjoying and doing well in your classes. The Summer and Fall 2009 schedule of classes is available online at <http://www.laspositascollege.edu> and then click on the "Register for Classes (Class Web)" link. The printed Summer and Fall schedules are expected to be available in the middle of April, with registration for continuing students to begin in late April. This means that now is a great time to schedule an appointment with Gilberto Victoria, International Student Counselor to complete your long term Student Educational Plan (SEP) and help you choose classes for next semester. Remember that all International students are required to have a SEP in your file.

We hope that you find this newsletter informative and helpful. As always, the ISP welcomes your feedback, questions, and story ideas. Please feel free to stop by, e-mail or call us if you need assistance. Best Wishes for the rest of your semester!

Spring Break - April 6 - 11

There will be no classes during Spring Break, April 6 - April 11. The ISP Office will remain open, however, during our regular business hours. Enjoy the break!



Spring Fling - Boomers - Tuesday, April 7

Looking for something fun to do during Spring Break? Back by popular demand, please join us for the 2nd Annual ISP Spring Fling and Mini Golf Tournament at Boomers in Livermore. Visit <http://www.boomersparks.com/park/livermore/index.html> for more information. Best of all, it's **FREE**. To join, sign up in the ISP Office, Room 1502 by Friday, April 3. Hope to see you there!



Last Day to Withdraw with a “W” - April 10



Please be advised that International students may NOT drop a class with a “W” unless you are still enrolled and attending at least 12 units. U.S. Immigration does not recognize “W’s” as part of your required 12 units to maintain full-time status. Before dropping a class, please see Cindy or Sean to avoid falling out of status.

Tax Filing Requirement - April 15

As reported in last month’s newsletter, the United States tax system requires every nonimmigrant present in the U.S. in 2008 (even for a day), whether you worked or not, to file a tax form with the Internal Revenue Service (IRS). See last month’s newsletter for more information about preparing and filing your tax returns. It is available on our website at <http://www.laspositascollege.edu/international>. Then click on “Newsletter”. The deadline to file your income tax return if you worked last year and made more than \$3,500 is April 15, 2009. If you did not work in the U.S. last year, you are still required to file IRS Form 8843 before June 15, 2009. Please come to see us if you have any questions.



April 1 - April Fool’s Day

The beginning of this day of trickery was in 1582 in France. Prior to that year, the new year was celebrated for eight days, beginning on March 25. The celebration culminated on April 1. With the reform of the calendar under Pope Gregory XIII, the Gregorian Calendar was introduced and New Year’s Day was moved to January 1. However, communications being what they were in the days when news travelled by foot, many people did not receive the news for several years. Other refused to accept the new calendar and continued to celebrate the new year on April 1. These backward folk were labeled as “fools” by the general populace. They were subject to some ridicule and were often sent on “fools errands” or were made the butt of practical jokes. Practical jokes are a common practice on April Fool’s Day. Pranks performed on April Fool’s Day range from the simple (such as saying “your shoe’s untied”) to the elaborate. One year, officials at Los Angeles International Airport startled arriving passengers by posting “Welcome to Detroit” by the baggage claim. Setting a roommate’s alarm clock back an hour is also a common gag. Whatever the prank, the trickster usually ends it by yelling to his victim “April Fool”



Northern California Cherry Blossom Festival

April 11 & 12 and April 18 & 19

Japantown

San Francisco

One of California's most prominent celebrations of Japanese and other Asian traditions, the Northern California Cherry Blossom Festival (*Sakura Matsuri*) will be celebrating its 42nd year. Each year, over 200,000 people attend this massive binational and bicultural celebration showcasing Japanese culture and the diversity of the Japanese-American community. There will be a Street Fair with a food bazaar featuring traditional Japanese cuisine and cooking demonstrations, a Japanese traditional arts and crafts fair and a children's village. Entertainment stages will feature performances by Japanese classical and folk dancers, martial artists, taiko drummers and others. Go to <http://nccbf.org/home> for more information.



Grand Parade- Sunday, April 19

The annual Grand Parade will begin at 1:00 pm at the Civic Center in San Francisco, and then will proceed up Polk Street and will end in Japantown at Post and Fillmore. The parade features over 1,500 participants including marching bands, dancers in kimono, traditional musicians, the Cherry Blossom Queen and her court, and at the end of the parade, the traditional "mikoshi" (a portable shrine). The Grand Marshal this year is actor and activist George Takei, best known for his portrayal of "Mr. Sulu" in the television and film series "Star Trek".

Musical - Working

The Las Positas production of a musical based on the book by Studs Terkel.

Tickets: \$10 for students,

\$15 General Admission

Fridays and Saturdays April 3, 4, 17 & 18 at 8:00 pm

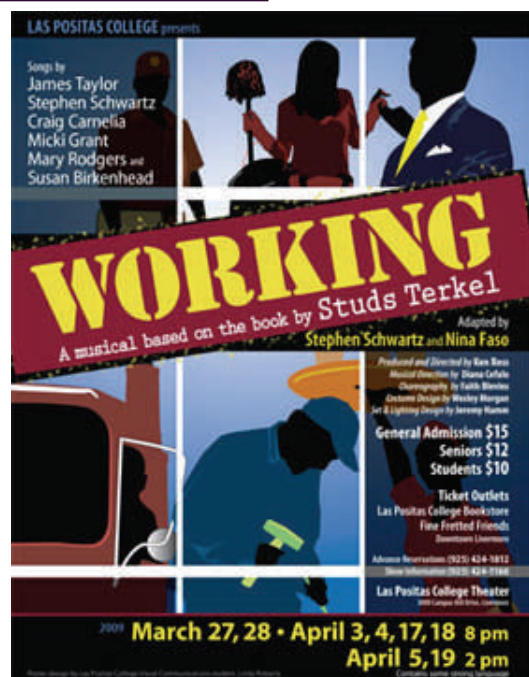
Sundays, April 5 and 19 at 2:00 pm

Las Positas College Theater—Building #800

Tickets available at the LPC Bookstore

For more information, please call Ken Ross at 424-1166.

For advanced reservations, call 424-1812.



Calling All Potential Graduates!

Do you believe you are ready to complete your degree or certificate this semester? If so, please schedule an appointment with Gilberto Victoria in the Counseling Office, Building #700 soon to review your progress toward a degree or certificate completion. Following this appointment, you can apply to Admissions and Records in Building #700 for your formal course evaluation for graduation by filling out a "Request for AA/AS Degree or Certificate of Completion/Achievement Form". **The deadline is Friday, April 17.** It is also very important that you notify the ISP Office of your plans. Students planning on transferring to a University must notify the ISP to ensure your SEVIS record is transferred in a timely manner. Students who would like to apply for Post-Completion Optional Practical Training (OPT) should begin the application pro-



Major League Baseball

The Bay Area is fortunate to have 2 professional Major League Baseball (MLB) teams. The **Oakland Athletics** (A's) open their season at Oakland-Alameda County Coliseum with the following home games this month:



April 11-13 vs. Seattle Mariners (who have Ichiro Suzuki)

April 14-16 vs. **Boston Red Sox** (2007 MLB Champion and Sean and



Counselor Nancy Wright's favorite team!)

April 25-27 vs. Tampa Bay Rays (2008 American League Champions)

Single day tickets range from \$9 to \$55. Bleacher seats are \$13. You can purchase tickets for the A's at <http://Oakland.athletics.mlb.com>



The **San Francisco Giants** open their season at spectacular AT&T Park and play the following home games this month:

April 7-10 vs. Milwaukee Brewers

April 17-19 vs. Arizona Diamondbacks

April 21-22 vs. San Diego Padres

April 27-29 vs. Los Angeles Dodgers (the Giants' rival)

Single day tickets range from \$7 - \$77. You can purchase tickets for the Giants at <http://www.sfgiants.com>

Major League Soccer



The 2-time MLS champion San Jose Earthquakes return to play professional soccer in North America's premier Soccer (football) league - Major League Soccer. The Earthquakes biggest rival is the Los Angeles Galaxy, the team that David Beckham plays for. The Earthquakes will play their home games at Buck Shaw Stadium at Santa Clara University in Santa Clara while their new stadium is being built in San Jose. Their home games this month are:

Saturday, April 11 vs the Chicago Fire at 1:00 pm.

Saturday, April 18 vs. Los Angeles Galaxy at 7:30 pm at the Oakland Coliseum *without

David Beckham

Wednesday, April 29 vs. New York bulls at 7:30 pm

The games vs. the Los Angeles Galaxy in April and June will take place at the Oakland- Alameda County Coliseum in Oakland. Tickets for the games range from \$20—\$60 and can be purchased at <http://sjeearthquakes.mslnet.com>.

April Birthdays

Anthony Chuma— April 2
 Fong Ring Lai (Stella) - April 5
 Chang Hun Ma - April 9
 Darlynsen Lira—April 10
 Sylvia Lorena Del Pozo - April 13
 Nhyu Quynh Tran - April 14
 Anne De Campos - April 20
 Ki Sun Kim - April 25
 Eunjee Kim - April 27



Feliz Aniversário (Portuguese for Happy Birthday)

Birthday Tradition in Brazil

The birthday child receives a pull on the earlobe for each year they have been alive. The birthday person also gives the first slice of cake to his/her most special friend or relative, usually mom or dad.

Earth Day—Saturday, April 19

Livermore Earth Day

Get involved in a community clean-up and then enjoy entertainment and activities for children on Saturday, April 18. The day begins at 8:30am with a continental breakfast and then buses depart to clean-up sites at 9:00 am. The festival begins at 11:30 with live music, arts and crafts, vendors and kids' activities. Meet at the Robert Livermore Community Center, 4444 East Ave. Call 925-373-5700 or visit the website <http://www.larpd.dst.ca.us> for more information.



Concerned about your Grades?

If you are concerned about how you are doing in a particular class, please follow these suggestions:

- If you haven't done so already, talk to your instructor about your concerns
- Use the Tutorial Center located in the Study and Reading Room in Building #2400
- Go to the Writing Center at the Integrated Learning Center (ILC), Building #1200 for one-on-one help with writing assignments.
- Ask your instructor for extra credit work that can help boost your grade.

ISP Open House—May 5

Save the Date! To celebrate *Cinco De Mayo* (the fifth of May), the ISP will have an Open House in Room #1502 on Tuesday, May 5 from 12:00 to 2:00 pm. Come and meet fellow students, staff, and instructors and enjoy our *fiesta* (party in Spanish) with Mexican food. *Hasta luego* (See you) !



Sales Tax Increase

Effective, April 1, 2009, the State sales and use tax will increase 1%. In Alameda county, the new sales tax rate is **9.750%**.

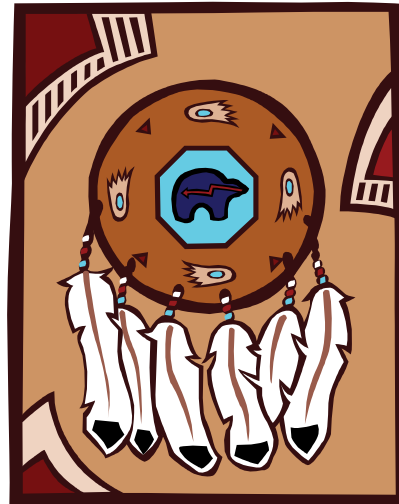
LPC Native American Exposition - April 13-16

Mini Film Festival

Monday, April 13 - Thursday, April 16 @ 11:00 am - Student Center (Building 1700)
Wednesday, Film shown in Staff Lounge (Building 1600)

Guest Speaker & Documentary

Tuesday, April 14 @ 6:00 pm - Student Center (Building 1700)
"Indian Boarding Schools" - Guest Speaker - Mr. Tom Phillips
Thursday, April 16 @ 6:00 pm - Student Center
"In Whose Honor: American Indian Mascots" - Guest Speaker:
Dr. Amber Machamer



Traditional Feed & Performances

Wednesday, April 15 @ 6:00 pm - Student Center (Building 1700)
Traditional Fee, California Native Dancers, Aztec Dancers, and Polynesian Dancers

Visit <http://www.nacc.weebly.com> for more information.

Livermore Powwow - Saturday, April 18

Native American Celebration
Open to the Public

Free

Saturday, April 18
11:00 am - 10:00 pm - Gym (Building 2500)
Gourd Dancing 11:00 am
Grand Entry 12:00 pm, 6:00 pm
Contest Dancing, Arts & Crafts, Native Food
For more information, contact Smoke Johnson at (925) 577-8471.





3000 Campus Hill Drive
Livermore, CA 94551

International Student Program
Building # 1500
Room # 1502
Office Hours: M-Th 9:00—4:00
F 9:00—1:00



Easter - Sunday, April 12

This is not an official holiday. It is a religious holiday in which Christians celebrate the resurrection (coming back to life) of Jesus Christ which they believe occurred after his death by crucifixion in 27—33 AD. In the United States, the holidays has become partially secularized. Many non-Christians celebrate the Easter traditions of decorating Easter eggs on Saturday evening and having children hunt for them on Sunday morning, by which time they have been mysteriously hidden all over the house and garden. According to the children's stories, the eggs and other treats are hidden overnight by the Easter Bunny which children find in an Easter basket waiting for them when they wake up. Many families attend Sunday mass in church in the morning and then participate in a family feast or party in the afternoon that includes the eating the colored eggs and ham. Easter is celebrated each year according to the lunar calendar on the Sunday following the first full moon after the Vernal Equinox (the first day of Spring) and many of the Easter traditions of eggs, rabbits, and Easter lilies are signs of Spring or rebirth.



Contact Us

Cindy Balero

International Student Program Coordinator

Telephone: (925) 424-1548

E-mail: cbalero@laspositascollege.edu

Sean Day

International Admissions Specialist

Telephone: (925) 424-1540

E-mail: sday@laspositascollege.edu

